

Pb Free

RoHS Compliant

Features

- Small size
- Low insertion loss
- High selectivity
- Hermetic seal

Application

- GSM

How to Order

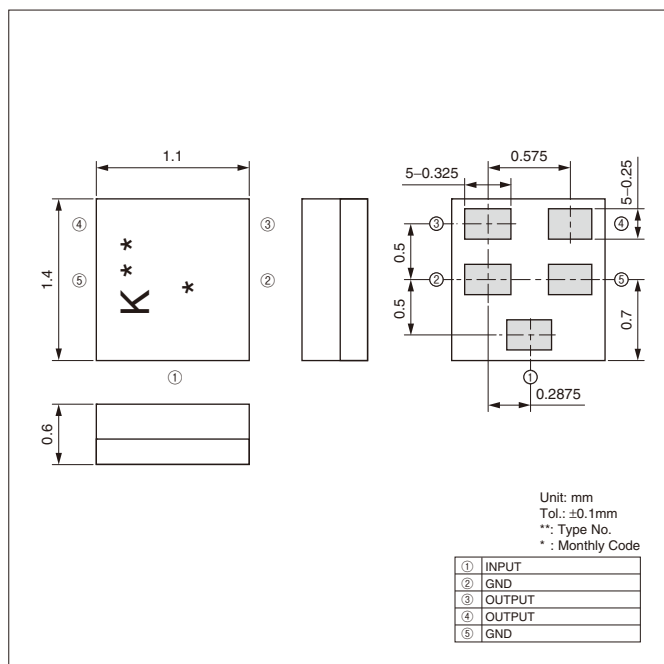
SF 14 - 0881 M 5 UB 50
① ② ③ ④ ⑤ ⑥ ⑦

- ① Type of Product (SAW Filter)
- ② Package Size
- ③ Nominal Center Frequency
- ④ Spec.
- ⑤ Number of Terminals
- ⑥ Input/ Output
- ⑦ Custom Specification (STD)

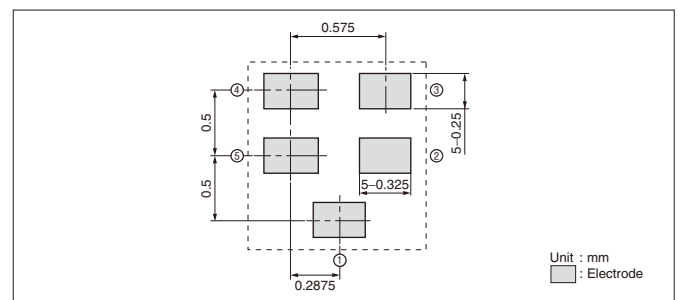
Specifications

Part No.	Output	Application	Pass Band Frequency	Insertion Loss (dB)	Pass Band Variation (dB)	VSWR	Absolute Rejection (dB)						Operating Temperature	Storage Temperature
							0MHz	840MHz	914MHz	940MHz	1025MHz	2880MHz		
SF14-0881M5UB50	Balance	GSM850 Rx	869MHz - 894MHz	1.7 max.	1.5 max.	2.5 max.	0MHz 840MHz	840MHz 849MHz	914MHz 940MHz	940MHz 600MHz	—	—	-30 to +85°C	-40 to +85°C
SF14-0942M5UB00		GSM900 Rx	925MHz - 960MHz	2.0 max.	1.5 max.	2.3 max.	0MHz 880MHz	880MHz 905MHz	905MHz 915MHz	980MHz 1025MHz	1025MHz 2880MHz	2880MHz 600MHz		
SF14-1842M5UB00		GSM1800 Rx	1805MHz - 1880MHz	2.3 max.	1.5 max.	2.3 max.	0MHz 1300MHz	1300MHz 1705MHz	1705MHz 1785MHz	1920MHz 1980MHz	1980MHz 3000MHz	3000MHz 5000MHz		
SF14-1960M5UB50		GSM1900 Rx	1930MHz - 1990MHz	2.3 max.	1.5 max.	2.3 max.	0MHz 1830MHz	1830MHz 1910MHz	2010MHz 2070MHz	2070MHz 2150MHz	2150MHz 3000MHz	3000MHz 600MHz		

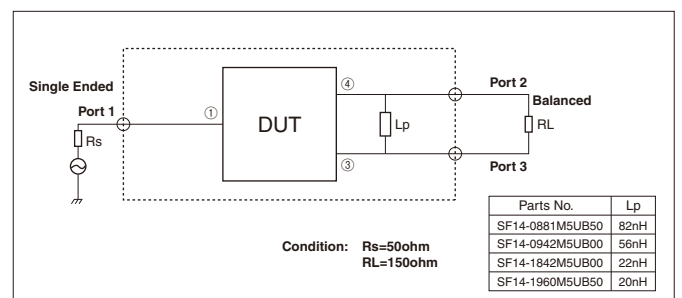
Dimensions



Recommended Land Pattern

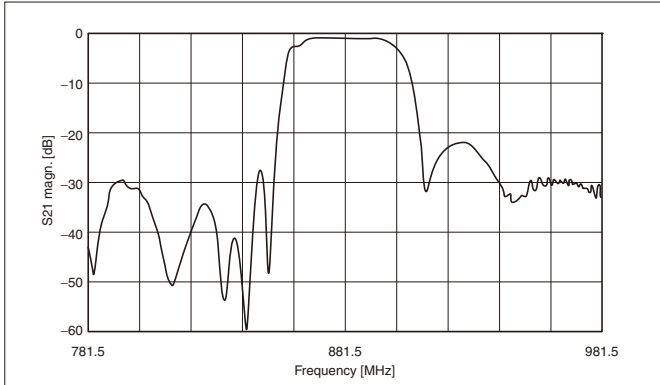


Test Circuit

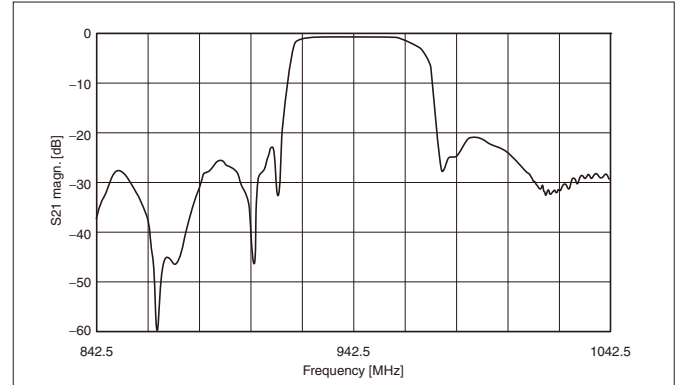


Characteristics

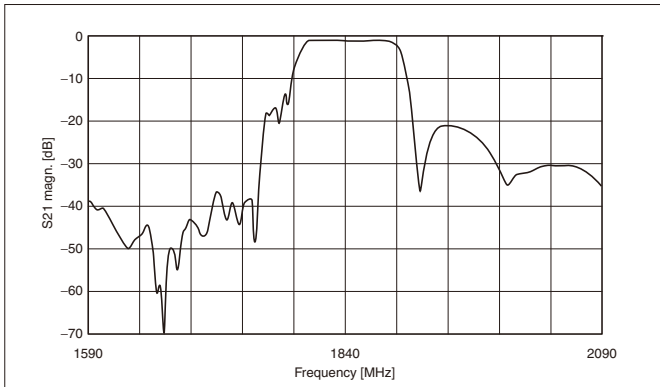
<GSM850> Part No.: SF14-0881M5UB50



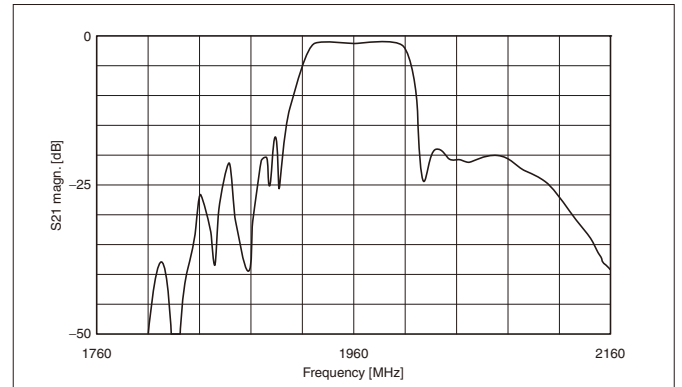
<GSM900> Part No.: SF14-0942M5UB00



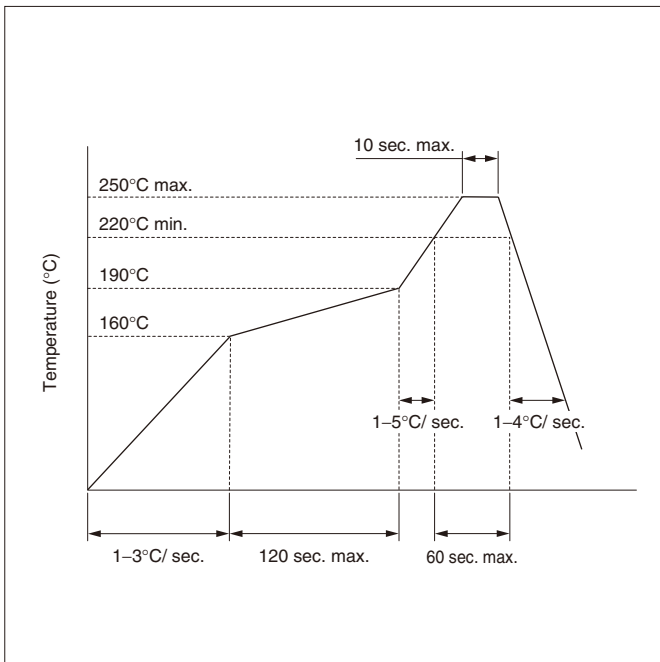
<GSM1800> Part No.: SF14-1842M5UB00



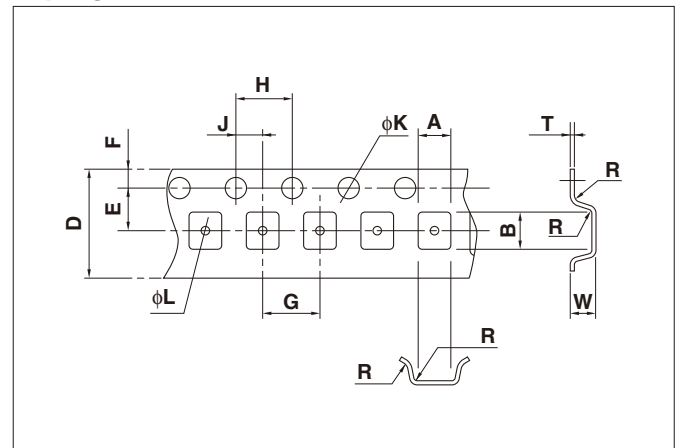
<GSM1900> Part No.: SF14-1960M5UB50



Recommended Reflow Profile



Taping Dimensions



(Unit: mm)

Part	A	B	D	E	F
Dimension	1.4±0.1	1.7±0.1	8.0±0.2	3.5±0.05	1.75±0.1
Part	G	H	J	K	L
Dimension	4.0±0.1	4.0±0.1	2.0±0.05	1.5±0.1	0.5±0.05
Part	R	W	T		
Dimension	0.3 max.	0.8±0.1	0.2±0.05		