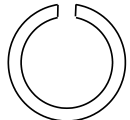
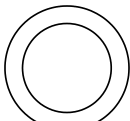
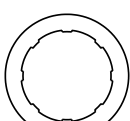
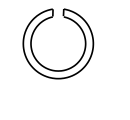
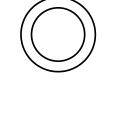
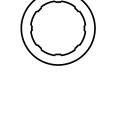
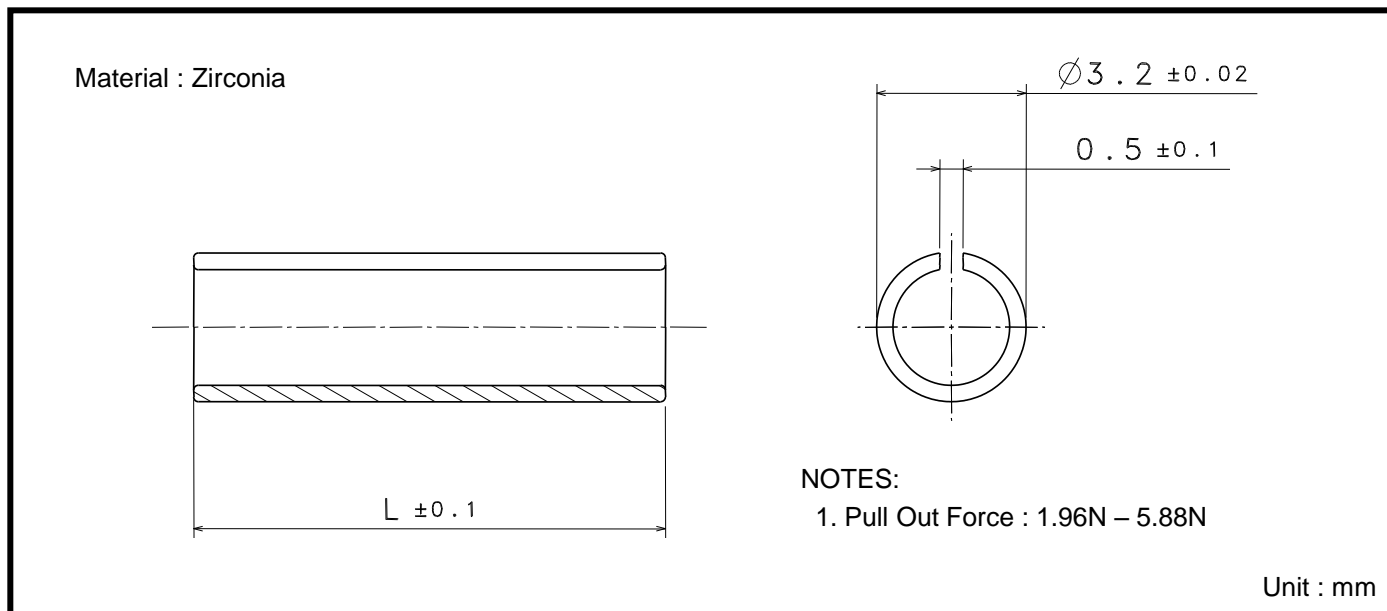


Standard Sleeve Product List

φ2.5mm Sleeve	<p><u>1. SPLIT TYPE (2P)</u></p> <p><u>2. PRECISION TYPE (3P)</u></p> <p><u>3. 8 LAND PRECISION TYPE (4P)</u> (Air Pressure / Dust Release Structure)</p>	  
φ1.25mm Sleeve	<p><u>4. SPLIT TYPE (5P)</u></p> <p><u>5. PRECISION TYPE (6P)</u></p> <p><u>6. 6 LAND PRECISION TYPE (7P)</u> (Air Pressure / Dust Release Structure)</p>	  

Contents in this list are subject to change without notice. It is recommended to confirm the latest information at the time of usage.
We may not be able to accept requests based on old list.

1. $\phi 2.5$ SPLIT SLEEVE



■ Inquiry Code

K C S S 250 -

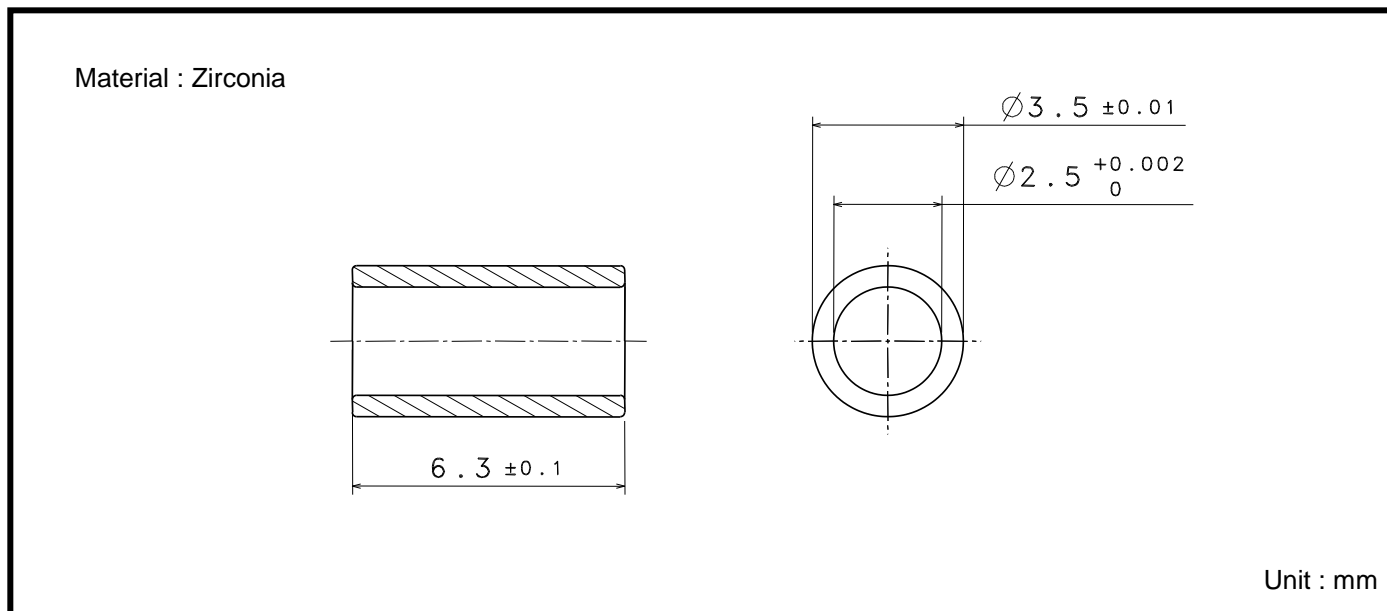
Length (L)

- 1: 11.4mm for SC / FC connector
- 2: 10.1mm for ST Connector

■ For other length, please contact a KYOCERA sales engineer.

ST is a registered trademark of Furukawa Electric North America, Inc. in the United States of America.

2. $\phi 2.5$ PRECISION SLEEVE



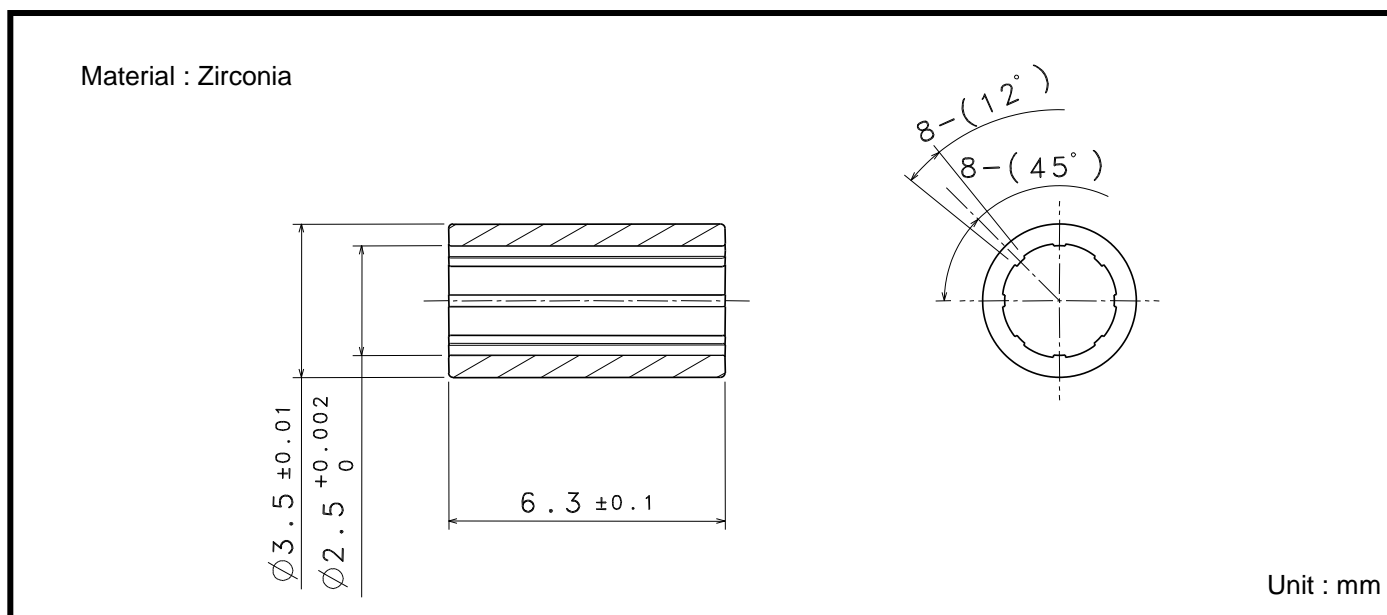
■ Inquiry Code

K C P S 250 - 1

■ For other length and diameters, please contact a KYOCERA sales engineer.

3. $\phi 2.5$ PRECISION SLEEVE (8 LAND)

Air Pressure / Dust Release Structure

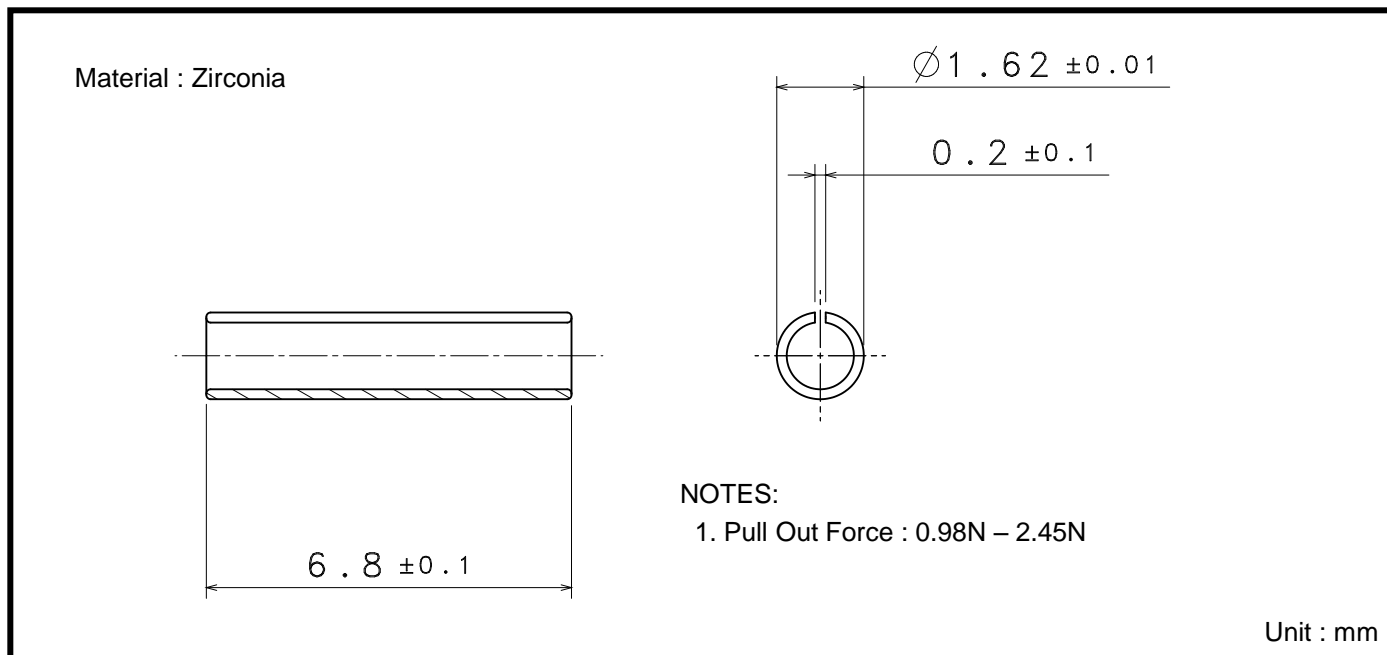


■ Inquiry Code

K C P S 250 - 2

■ For other length and diameters, please contact a KYOCERA sales engineer.

4. $\phi 1.25$ SPLIT SLEEVE

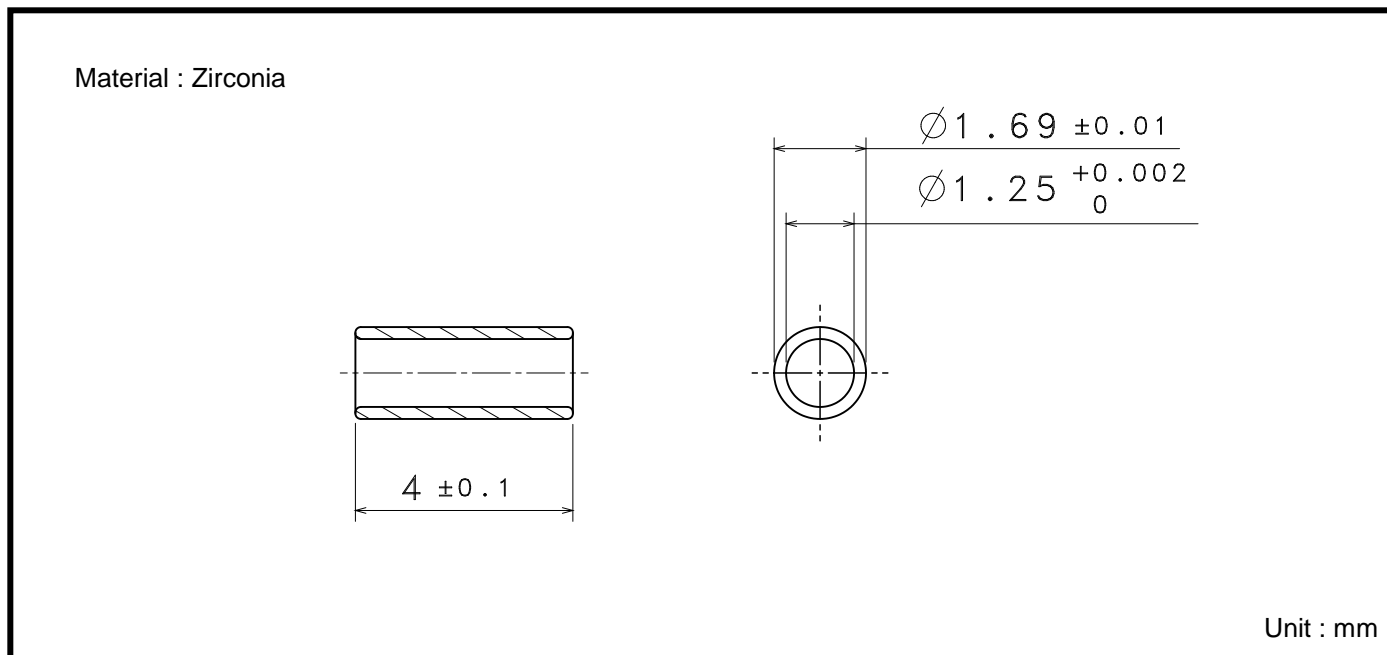


Inquiry Code

K C S S 125

 For other length, please contact a KYOCERA sales engineer.

5. $\phi 1.25$ PRECISION SLEEVE



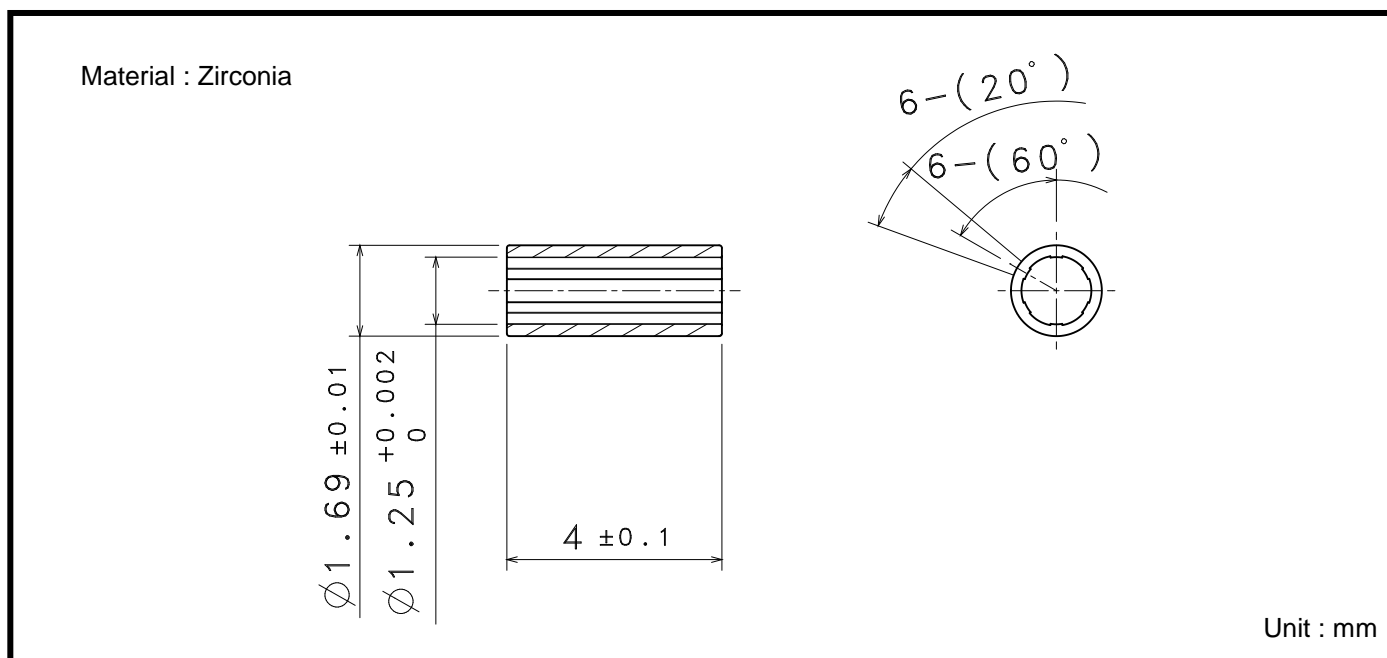
■ Inquiry Code

K C P S 125 - 1

■ For other length and diameters, please contact a KYOCERA sales engineer.

6. $\phi 1.25$ PRECISION SLEEVE (6 LAND)

Air Pressure / Dust Release Structure



■ Inquiry Code

K C P S 125 - 2

■ For other length and diameters, please contact a KYOCERA sales engineer.