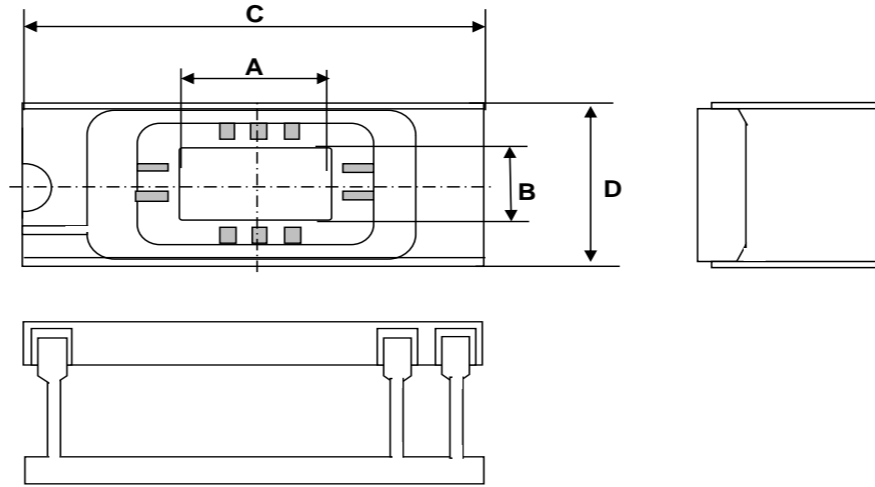


KYOCERA C-DIP (CERAMIC DUAL INLINE PACKAGES)



Inquiries about this list ?
Please Click Here.

UNIT : mm (If you prefer inch dimensions, please click here.)

#=Connected pin number
N=No Metallization
0=No Connection

R0157G

LEAD COUNT	UNIT	CAVITY			OVERALL C x D	LAYER THICKNESS				LEAD		KYOCERA MATERIAL CODE A440: Black A473: White	CONNECTION		DRAWING NO.
		DIE CAV. A x B	W/B TIER SINGLE(S) DOUBLE(D)	UP(U) DOWN(D)		1ST	2ND	3RD	TOTAL	STAND OFF HEIGHT	PITCH		SEAL RING	DIE ATTACH	
8	mm	3.05MIN X 4.42	S	U	10.29MAX X 7.87	0.508	0.635	-	2.159	0.889	2.540	A440	0	0	KD-SB9A83
8	mm	5.59 X 4.42	S	U	13.21 X 7.87	0.508	0.635	-	2.159	0.889	2.540	A440	0	0	KD-SB9F71
14	mm	4.57 X 3.81	S	U	17.78 X 7.87	0.508	0.635	-	2.159	0.889	2.540	A440	0	0	KD-SB9F73
14	mm	5.59 X 3.96	S	U	17.78 X 7.87	0.508	0.508	-	2.032	0.889	2.540	A440	0	0	KD-SC40A8
14	mm	6.60 X 4.31MIN	S	U	18.03MAX X 7.87	0.635	0.762	-	2.159	0.889	2.540	A440	0	0	KD-SB9F75
14	mm	6.60 X 4.31MIN	S	U	18.03MAX X 7.87	0.635	0.762	-	2.159	0.889	2.540	A440	0	N	KD-SC40A6
16	mm	4.57 X 3.81	S	U	20.32MAX X 7.87	0.635	0.508	-	2.159	0.889	2.540	A440	0	0	KD-SC40B0
16	mm	5.08 X 4.32	S	U	20.32 X 7.87	0.635	0.635	-	2.286	0.889	2.540	A440	0	0	KD-SC40B9
16	mm	5.59 X 3.96	S	U	20.32 X 7.87	0.635	0.762	-	2.159	0.889	2.540	A440	0	0	KD-SC403C
16	mm	6.10MIN X 4.32MIN	S	U	20.32 X 7.87	0.635	0.508	-	2.159	0.889	2.540	A440	0	0, 1, 2, 8 or 10	KD-78467-A
16	mm	6.10 X 4.11	S	U	20.32 X 7.87	0.508	0.635	-	2.159	0.889	2.540	A440	0	0	KD-S83229-A
16	mm	6.10 X 4.32MIN	S	U	20.32 X 7.87	0.635	0.508	-	2.159	0.889	2.540	A440	0, 1, 5, 7, 8 or 10	0, 1, 5, 7, 8 or 10	KD-75092-G
16	mm	6.10 X 4.32MIN	S	U	20.32 X 7.87	0.635	0.508	-	2.159	0.889	2.540	A440	0	0	KD-SC402U
16	mm	6.10 X 4.42	S	U	20.32 X 7.87	0.508	0.635	-	2.159	0.889	2.540	A440	0	0	KD-SB9A87
16	mm	7.11 X 5.59	S	U	20.32 X 7.87	0.635	0.508	-	2.159	0.889	2.540	A440	0	0	KD-SC40E7
16	mm	8.13 X 4.32MIN	S	U	20.32 X 7.87	0.635	0.508	-	2.032	0.889	2.540	A440	0	0	KD-SC40C6
16	mm	12.45 X 5.72	S	U	20.32 X 7.87	0.508	0.635	-	2.159	0.889	2.540	A440	0	0	KD-SB9F77
18	mm	5.59 X 4.32	S	U	22.86 X 7.87	0.635	0.508	-	2.159	0.889	2.540	A440	0, 1, 5, 8, 10 or 14	0, 1, 5, 8, 10 or 14	KD-SC403L
18	mm	5.59 X 4.32	S	U	22.86 X 7.87	0.508	0.508	-	2.032	0.889	2.540	A440	0 or 3	0 or 3	KD-S79325-A
18	mm	6.73 X 4.42	S	U	22.86 X 7.87	0.508	0.635	-	2.159	0.889	2.540	A440	0	0 or 1	KD-S77032-H
18	mm	6.73 X 4.42	S	U	22.86 X 7.87	0.635	0.508	-	2.159	0.889	2.540	A440	0	0	KD-SC40B1
18	mm	8.13 X 4.45	S	U	22.86 X 7.87	0.508	0.635	-	2.159	0.889	2.540	A440	0	0	KD-SB9F79
20	mm	5.46 X 4.42	S	U	25.4 X 7.87	0.508	0.635	-	2.159	0.889	2.540	A440	0	0	KD-SC40C0
20	mm	6.35 X 3.81MIN	S	U	25.4 X 7.87	0.508	0.508	-	1.524	0.889	2.540	A440	0	0	KD-SC40F4

#=Connected pin number
 N=No Metallization
 0=No Connection

R0157G

UNIT : mm (If you prefer inch dimensions, please click here.)

LEAD COUNT	UNIT	CAVITY			OVERALL C x D	LAYER THICKNESS				LEAD		KYOCERA MATERIAL CODE A440: Black A473: White	CONNECTION		DRAWING NO.
		DIE CAV. A x B	W/B TIER SINGLE(S) DOUBLE(D)	UP(U) DOWN(D)		1ST	2ND	3RD	TOTAL	STAND OFF HEIGHT	PITCH		SEAL RING	DIE ATTACH	
20	mm	6.60 X 4.45	S	U	25.4 X 7.87	0.635	0.508	-	2.159	0.889	2.540	A440	0	0 or 1	KD-SC403H
20	mm	6.60 X 4.83	S	U	25.4 X 7.87	0.508	0.508	-	2.032	0.889	2.540	A440	0	0	KD-SC40G2
20	mm	8.13 X 4.45	S	U	25.4 X 7.87	0.508	0.635	-	2.159	0.889	2.540	A440	0	0	KD-SB9F81
22	mm	7.11 X 6.60	S	U	27.43 X 10.41	0.508	0.635	-	2.159	0.965	2.540	A440	0	0	KD-S78409-D
24	mm	6.35SQ	S	U	30.48 X 15.49	0.508	0.635	-	2.159	1.270	2.540	A440	0	0	KD-SB9F83
24	mm	7.87SQ	S	U	30.48 X 15.49	0.508	0.635	-	2.159	1.270	2.540	A440	0	0	KD-SB9F85
24	mm	8.89 X 4.45	S	U	30.48 X 7.87	0.635	0.508	-	2.159	1.270	2.540	A440	0	0	KD-SC40B8
24	mm	9.65SQ	S	U	30.48 X 15.49	0.635	0.635	-	2.286	1.270	2.540	A440	0	0 or 21	KD-SC30AR
24	mm	9.65SQ	S	U	30.48 X 15.49	0.508	0.635	-	2.159	1.270	2.540	A440	0	1	KD-SC403V
24	mm	9.65SQ	S	U	30.48 X 15.49	0.508	0.635	-	2.159	1.270	2.540	A440	0	0	KD-SC406R
24	mm	16.51 X 10.92	S	U	30.48 X 15.49	0.635	0.635	-	2.540	1.270	2.540	A473	0	0	KD-SB9F87
24	mm	16.51 X 10.92	S	U	30.48 X 15.49	0.635	0.635	-	2.540	1.270	2.540	A473	0	0	KD-SC40K7
28	mm	5.59SQ	S	U	35.56 X 15.49	0.508	0.635	-	2.159	1.270	2.540	A440	0	0	KD-S88909-A
28	mm	6.35SQ	S	U	35.56 X 15.49	0.508	0.635	-	2.159	1.270	2.540	A440	0	0	KD-SB9F89
28	mm	6.35 X 7.62	S	U	35.56 X 15.49	0.508	0.635	-	2.159	1.270	2.540	A440	0	0	KD-84523-B
28	mm	7.87SQ	S	U	35.56 X 15.49	0.508	0.635	-	2.159	1.270	2.540	A440	0	0	KD-SB9F91
28	mm	7.87SQ	S	U	35.56 X 15.49	0.508	0.635	-	2.159	1.270	2.540	A440	0	0	KD-SC404B
28	mm	8.89SQ	S	U	35.56 X 15.49	0.508	0.635	-	2.159	1.270	2.540	A440	0	0	KD-SC40D0
28	mm	10.01SQ	S	U	35.56 X 15.49	0.508	0.635	-	2.159	1.270	2.540	A440	0	0	KD-SB9F93
40	mm	6.35SQ	S	U	50.8 X 15.49	0.635	0.635	-	2.286	1.270	2.540	A440	0	0	KD-SC40KP
40	mm	6.35SQ	S	U	50.8 X 15.49	0.508	0.635	-	2.159	1.270	2.540	A440	0	0	KD-SC3092
40	mm	7.87SQ	S	U	50.8 X 15.49	0.508	0.635	-	2.159	1.270	2.540	A440	0	0	KD-SC3090
40	mm	7.87SQ	S	U	50.8 X 15.49	0.508	0.635	-	2.159	1.270	2.540	A440	0	0	KD-SB9F95
40	mm	10.16SQ	S	U	50.8 X 15.49	0.635	0.635	-	2.286	1.270	2.540	A440	0	0, 1 or 40	KD-78302-D
40	mm	11.43 X 8.89	S	U	50.8 X 15.49	0.635	0.635	-	2.286	1.270	2.540	A440	0	0	KD-SC40AT
48	mm	6.35SQ	S	U	60.96 X 15.49	0.508	0.635	-	2.159	1.270	2.540	A440	0	0	KD-SC40P3
48	mm	7.87SQ	S	U	60.96 X 15.49	0.508	0.635	-	2.159	1.270	2.540	A440	0	0	KD-SB9F97
48	mm	10.16SQ	S	U	60.96 X 15.49	0.508	0.635	-	2.159	1.270	2.540	A440	0	0	KD-SB9F99
48	mm	12.25 X 10.16	S	U	60.96 X 15.49	0.508	0.635	-	2.159	1.270	2.540	A440	0	0	KD-84193-A
64	mm	14.00MIN X 11.00MIN	S	U	81.28 X 23.11	0.508	0.635	-	2.159	1.270	2.540	A440	N	1	KD-S79513-E

* Contents in this list are subject to change without notice. It is recommended to confirm the latest information at the time of usage. We may not be able to accept requests based on old list.