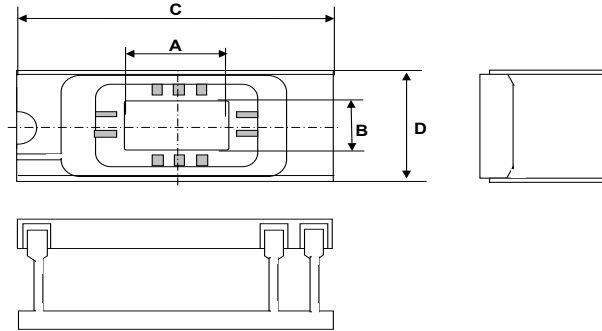


KYOCERA C-DIP (CERAMIC DUAL INLINE PACKAGES)



Inquiries about this list ?
Please Click Here.

UNIT : mm ([if you prefer inch dimensions, please click here.](#))

#=Connected pin number
N=No Metallization
0=No Connection

R0157F

LEAD COUNT	UNIT	CAVITY			OVERALL C x D	LAYER THICKNESS				LEAD		KYOCERA MATERIAL CODE A440: Black A473: White	CONNECTION		DRAWING NO.
		DIE CAV. A x B	W/B TIER SINGLE(S) DOUBLE(D)	UP(U) DOWN(D)		1ST	2ND	3RD	TOTAL	STAND OFF HEIGHT	PITCH		SEAL RING	DIE ATTACH	
8	mm	3.05MIN X 4.42	S	U	10.29MAX X 7.87	0.508	0.635	-	2.159	0.889	2.540	A440	0	0	KD-SB9A83
8	mm	5.59 X 4.42	S	U	13.21 X 7.87	0.508	0.635	-	2.159	0.889	2.540	A440	0	0	KD-SB9F71
14	mm	4.57 X 3.81	S	U	17.78 X 7.87	0.508	0.635	-	2.159	0.889	2.540	A440	0	0	KD-SB9F73
14	mm	5.59 X 3.96	S	U	17.78 X 7.87	0.508	0.508	-	2.032	0.889	2.540	A440	0	0	KD-80292
14	mm	6.60 X 4.31MIN	S	U	18.03MAX X 7.87	0.635	0.762	-	2.159	0.889	2.540	A440	0	0	KD-SB9F75
14	mm	6.60 X 4.31MIN	S	U	18.03MAX X 7.87	0.635	0.762	-	2.159	0.889	2.540	A440	0	N	KD-S89702
16	mm	4.57 X 3.81	S	U	20.32MAX X 7.87	0.635	0.508	-	2.159	0.889	2.540	A440	0	0	KD-S76129-C
16	mm	5.08 X 4.32	S	U	20.32 X 7.87	0.635	0.635	-	2.286	0.889	2.540	A440	0	0	KD-S78343-B
16	mm	5.59 X 3.96	S	U	20.32 X 7.87	0.635	0.762	-	2.159	0.889	2.540	A440	0	0	KD-S83332-A
16	mm	6.10MIN X 4.32MIN	S	U	20.32 X 7.87	0.635	0.508	-	2.159	0.889	2.540	A440	0	0, 1, 2, 8 or 10	KD-78467-A
16	mm	6.10 X 4.11	S	U	20.32 X 7.87	0.508	0.635	-	2.159	0.889	2.540	A440	0	0	KD-S83229-A
16	mm	6.10 X 4.32MIN	S	U	20.32 X 7.87	0.635	0.508	-	2.159	0.889	2.540	A440	0, 1, 5, 7, 8 or 10	0, 1, 5, 7, 8 or 10	KD-75092-G
16	mm	6.10 X 4.32MIN	S	U	20.32 X 7.87	0.635	0.508	-	2.159	0.889	2.540	A440	0	0	KD-76135-G
16	mm	6.10 X 4.42	S	U	20.32 X 7.87	0.508	0.635	-	2.159	0.889	2.540	A440	0	0	KD-SB9A87
16	mm	7.11 X 5.59	S	U	20.32 X 7.87	0.635	0.508	-	2.159	0.889	2.540	A440	0	0	KD-78138-E
16	mm	8.13 X 4.32MIN	S	U	20.32 X 7.87	0.635	0.508	-	2.032	0.889	2.540	A440	0	0	KD-76220-C
16	mm	12.45 X 5.72	S	U	20.32 X 7.87	0.508	0.635	-	2.159	0.889	2.540	A440	0	0	KD-SB9F77
18	mm	5.59 X 4.32	S	U	22.86 X 7.87	0.635	0.508	-	2.159	0.889	2.540	A440	0, 1, 5, 8, 10 or 14	0, 1, 5, 8, 10 or 14	KD-S77309-E
18	mm	5.59 X 4.32	S	U	22.86 X 7.87	0.508	0.508	-	2.032	0.889	2.540	A440	0 or 3	0 or 3	KD-S79325-A
18	mm	6.73 X 4.42	S	U	22.86 X 7.87	0.508	0.635	-	2.159	0.889	2.540	A440	0	0 or 1	KD-S77032-H
18	mm	6.73 X 4.42	S	U	22.86 X 7.87	0.635	0.508	-	2.159	0.889	2.540	A440	0	0	KD-82281-A
18	mm	8.13 X 4.45	S	U	22.86 X 7.87	0.508	0.635	-	2.159	0.889	2.540	A440	0	0	KD-SB9F79
20	mm	5.46 X 4.42	S	U	25.4 X 7.87	0.508	0.635	-	2.159	0.889	2.540	A440	0	0	KD-77050-D
20	mm	6.35 X 3.81MIN	S	U	25.4 X 7.87	0.508	0.508	-	1.524	0.889	2.540	A440	0	0	KD-83438

#=Connected pin number
 N=No Metallization
 0=No Connection

R0157F

UNIT : mm ([If you prefer inch dimensions, please click here.](#))

LEAD COUNT	UNIT	CAVITY			OVERALL C x D	LAYER THICKNESS				LEAD		KYOCERA MATERIAL CODE A440: Black A473: White	CONNECTION		DRAWING NO.
		DIE CAV. A x B	W/B TIER SINGLE(S) DOUBLE(D)	UP(U) DOWN(D)		1ST	2ND	3RD	TOTAL	STAND OFF HEIGHT	PITCH		SEAL RING	DIE ATTACH	
20	mm	6.60 X 4.45	S	U	25.4 X 7.87	0.635	0.508	-	2.159	0.889	2.540	A440	0	0 or 1	KD-76250-C
20	mm	6.60 X 4.83	S	U	25.4 X 7.87	0.508	0.508	-	2.032	0.889	2.540	A440	0	0	KD-S85546-B
20	mm	8.13 X 4.45	S	U	25.4 X 7.87	0.508	0.635	-	2.159	0.889	2.540	A440	0	0	KD-SB9F81
22	mm	7.11 X 6.60	S	U	27.43 X 10.41	0.508	0.635	-	2.159	0.965	2.540	A440	0	0	KD-S78409-D
24	mm	6.35SQ	S	U	30.48 X 15.49	0.508	0.635	-	2.159	1.270	2.540	A440	0	0	KD-SB9F83
24	mm	7.87SQ	S	U	30.48 X 15.49	0.508	0.635	-	2.159	1.270	2.540	A440	0	0	KD-SB9F85
24	mm	8.89 X 4.45	S	U	30.48 X 7.87	0.635	0.508	-	2.159	1.270	2.540	A440	0	0	KD-80160-D
24	mm	9.65SQ	S	U	30.48 X 15.49	0.635	0.635	-	2.286	1.270	2.540	A440	0	0 or 21	KD-78495-C
24	mm	9.65SQ	S	U	30.48 X 15.49	0.508	0.635	-	2.159	1.270	2.540	A440	0	0 or 1	KD-78516-D
24	mm	16.51 X 10.92	S	U	30.48 X 15.49	0.635	0.635	-	2.540	1.270	2.540	A473	0	0	KD-SB9F87
24	mm	16.51 X 10.92	S	U	30.48 X 15.49	0.635	0.635	-	2.540	1.270	2.540	A473	0	0	KD-S92459
28	mm	5.59SQ	S	U	35.56 X 15.49	0.508	0.635	-	2.159	1.270	2.540	A440	0	0	KD-S88909-A
28	mm	6.35SQ	S	U	35.56 X 15.49	0.508	0.635	-	2.159	1.270	2.540	A440	0	0	KD-SB9F89
28	mm	6.35 X 7.62	S	U	35.56 X 15.49	0.508	0.635	-	2.159	1.270	2.540	A440	0	0	KD-84523-B
28	mm	7.87SQ	S	U	35.56 X 15.49	0.508	0.635	-	2.159	1.270	2.540	A440	0	0	KD-SB9F91
28	mm	7.87SQ	S	U	35.56 X 15.49	0.508	0.635	-	2.159	1.270	2.540	A440	0	0	KD-81533-F
28	mm	8.89SQ	S	U	35.56 X 15.49	0.508	0.635	-	2.159	1.270	2.540	A440	0	0	KD-S83103-B
28	mm	10.01SQ	S	U	35.56 X 15.49	0.508	0.635	-	2.159	1.270	2.540	A440	0	0	KD-SB9F93
40	mm	6.35SQ	S	U	50.8 X 15.49	0.635	0.635	-	2.286	1.270	2.540	A440	0	0	KD-77169-A
40	mm	6.35SQ	S	U	50.8 X 15.49	0.508	0.635	-	2.159	1.270	2.540	A440	0	0	KD-SC3092
40	mm	7.87SQ	S	U	50.8 X 15.49	0.508	0.635	-	2.159	1.270	2.540	A440	0	0	KD-SC3090
40	mm	7.87SQ	S	U	50.8 X 15.49	0.508	0.635	-	2.159	1.270	2.540	A440	0	0	KD-SB9F95
40	mm	10.16SQ	S	U	50.8 X 15.49	0.635	0.635	-	2.286	1.270	2.540	A440	0	0, 1 or 40	KD-78302-D
40	mm	11.43 X 8.89	S	U	50.8 X 15.49	0.635	0.635	-	2.286	1.270	2.540	A440	0	0	KD-S86A95-B
48	mm	6.35SQ	S	U	60.96 X 15.49	0.508	0.635	-	2.159	1.270	2.540	A440	0	0	KD-80177-E
48	mm	7.87SQ	S	U	60.96 X 15.49	0.508	0.635	-	2.159	1.270	2.540	A440	0	0	KD-SB9F97
48	mm	10.16SQ	S	U	60.96 X 15.49	0.508	0.635	-	2.159	1.270	2.540	A440	0	0	KD-SB9F99
48	mm	12.25 X 10.16	S	U	60.96 X 15.49	0.508	0.635	-	2.159	1.270	2.540	A440	0	0	KD-84193-A
64	mm	14.00MIN X 11.00MIN	S	U	81.28 X 23.11	0.508	0.635	-	2.159	1.270	2.540	A440	N	1	KD-S79513-E

* Contents in this list are subject to change without notice. It is recommended to confirm the latest information at the time of usage. We may not be able to accept requests based on old list.