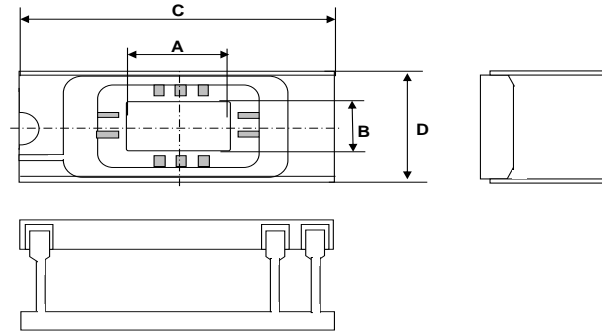


# KYOCERA C-DIP (CERAMIC DUAL INLINE PACKAGES)



Inquiries about this list ?  
Please Click Here.

UNIT : mm (If you prefer inch dimensions, please click here.)

#=Connected pin number  
N=No Metallization  
0=No Connection

R0157C

LEAD COUNT	UNIT	CAVITY			OVERALL C x D	LAYER THICKNESS				LEAD		KYOCERA MATERIAL CODE A440: Black A473: White	CONNECTION		DRAWING NO.
		DIE CAV. A x B	W/B TIER SINGLE(S) DOUBLE(D)	UP(U) DOWN(D)		1ST	2ND	3RD	TOTAL	STAND OFF HEIGHT	PITCH		SEAL RING	DIE ATTACH	
8	mm	3.05MIN X 4.42	S	U	10.29MAX X 7.87	0.508	0.635	-	2.159	0.889	2.540	A440	0	0	KD-S84832-B
8	mm	5.59 X 4.42	S	U	13.21 X 7.87	0.508	0.635	-	2.159	0.889	2.540	A440	0	0	KD-S77047-G
14	mm	4.57 X 3.81	S	U	17.78 X 7.87	0.508	0.635	-	2.159	0.889	2.540	A440	0	0	KD-80290-B
14	mm	5.59 X 3.96	S	U	17.78 X 7.87	0.508	0.508	-	2.032	0.889	2.540	A440	0	0	KD-80292
14	mm	6.60 X 4.31MIN	S	U	18.03MAX X 7.87	0.635	0.762	-	2.159	0.889	2.540	A440	0	0	KD-S87653-A
14	mm	6.60 X 4.31MIN	S	U	18.03MAX X 7.87	0.635	0.762	-	2.159	0.889	2.540	A440	0	N	KD-S89702
14	mm	7.62 X 4.83	S	U	18.03MAX X 7.87	0.508	0.635	-	2.159	0.889	2.540	A440	0	0	KD-S82682-A
16	mm	4.57 X 3.81	S	U	20.32MAX X 7.87	0.635	0.508	-	2.159	0.889	2.540	A440	0	0	KD-S76129-C
16	mm	5.08 X 4.32	S	U	20.32 X 7.87	0.635	0.635	-	2.286	0.889	2.540	A440	0	0	KD-S78343-B
16	mm	5.59 X 3.96	S	U	20.32 X 7.87	0.635	0.762	-	2.159	0.889	2.540	A440	0	0	KD-S83332-A
16	mm	6.10MIN X 4.19MIN	S	U	20.32 X 7.87	0.635	0.635	-	2.286	0.889	2.540	A440	0	8	KD-81625-B
16	mm	6.10MIN X 4.32MIN	S	U	20.32 X 7.87	0.635	0.508	-	2.159	0.889	2.540	A440	0	0, 1, 2, 8 or 10	KD-S78467-A
16	mm	6.10 X 4.11	S	U	20.32 X 7.87	0.508	0.635	-	2.159	0.889	2.540	A440	0	0	KD-S83229-A
16	mm	6.10 X 4.32MIN	S	U	20.32 X 7.87	0.635	0.508	-	2.159	0.889	2.540	A440	0, 1, 5, 7, 8 or 10	0, 1, 5, 7, 8 or 10	KD-75092-G
16	mm	6.10 X 4.32MIN	S	U	20.32 X 7.87	0.635	0.508	-	2.159	0.889	2.540	A440	0	0	KD-76135-G
16	mm	6.10 X 4.42	S	U	20.32 X 7.87	0.508	0.635	-	2.159	0.889	2.540	A440	0, 1 or 5	0, 1 or 5	KD-77048-G
16	mm	7.11 X 5.59	S	U	20.32 X 7.87	0.635	0.508	-	2.159	0.889	2.540	A440	0 or 1	0 or 1	KD-78138-E
16	mm	7.62 X 4, .57	S	U	20.32MAX X 7.87	0.508	0.508	-	2.159	0.889	2.540	A440	0	0	KD-S85766
16	mm	8.13 X 4.32MIN	S	U	20.32 X 7.87	0.635	0.508	-	2.032	0.889	2.540	A440	0	0	KD-76220-C
16	mm	12.45 X 5.72	S	U	20.32 X 7.87	0.508	0.635	-	2.159	0.889	2.540	A440	0	0	KD-82010-A
18	mm	5.59 X 4.32	S	U	22.86 X 7.87	0.635	0.508	-	2.159	0.889	2.540	A440	0, 1, 5, 8, 10 or 14	0, 1, 5, 8, 10 or 14	KD-S77309-E
18	mm	5.59 X 4.32	S	U	22.86 X 7.87	0.508	0.508	-	2.032	0.889	2.540	A440	0 or 3	0 or 3	KD-S79325-A
18	mm	6.73 X 4.42	S	U	22.86 X 7.87	0.508	0.635	-	2.159	0.889	2.540	A440	0	0 or 1	KD-S77032-H
18	mm	6.73 X 4.42	S	U	22.86 X 7.87	0.635	0.508	-	2.159	0.889	2.540	A440	0	0	KD-82281-A
18	mm	8.13 X 4.45	S	U	22.86 X 7.87	0.508	0.635	-	2.159	0.889	2.540	A440	0	0 or 1	KD-77175-F

#=Connected pin number  
 N=No Metallization  
 0=No Connection

R0157C

UNIT : mm (If you prefer inch dimensions, please click here.)

LEAD COUNT	UNIT	CAVITY			OVERALL C x D	LAYER THICKNESS				LEAD		KYOCERA MATERIAL CODE A440: Black A473: White	CONNECTION		DRAWING NO.
		DIE CAV. A x B	W/B TIER SINGLE(S) DOUBLE(D)	UP(U) DOWN(D)		1ST	2ND	3RD	TOTAL	STAND OFF HEIGHT	PITCH		SEAL RING	DIE ATTACH	
18	mm	12.19 X 5.08	S	U	22.86 X 7.87	0.635	0.635	-	2.286	0.889	2.540	A440	0	0	KD-S86302-C
20	mm	5.46 X 4.06	S	U	25.4 X 7.87	0.508	0.635	-	2.159	0.889	2.540	A440	0	0	KD-S84357-A
20	mm	5.46 X 4.42	S	U	25.4 X 7.87	0.508	0.635	-	2.159	0.889	2.540	A440	0	0	KD-77050-D
20	mm	6.35 X 3.81MIN	S	U	25.4 X 7.87	0.508	0.508	-	1.524	0.889	2.540	A440	0	0	KD-83438
20	mm	6.60 X 4.45	S	U	25.4 X 7.87	0.635	0.508	-	2.159	0.889	2.540	A440	0	0 or 1	KD-76250-C
20	mm	6.60 X 4.83	S	U	25.4 X 7.87	0.508	0.508	-	2.032	0.889	2.540	A440	0	0	KD-S85546-B
20	mm	8.13 X 4.45	S	U	25.4 X 7.87	0.508	0.635	-	2.159	0.889	2.540	A440	0	0	KD-S86832
20	mm	9.53 X 5.08	S	U	25.4 X 7.87	0.635	0.635	-	2.286	0.889	2.540	A440	0	0	KD-S87735-A
22	mm	6.35 X 5.59	S	U	27.43 X 10.41	0.635	0.635	-	2.032	0.965	2.540	A440	0	0	KD-82235
22	mm	7.11 X 6.60	S	U	27.43 X 10.41	0.508	0.635	-	2.159	0.965	2.540	A440	0	0	KD-S78409-D
22	mm	10.01 X 6.20	S	U	27.43 X 10.41	0.635	0.635	-	2.159	0.965	2.540	A440	0	0	KD-84421-B
24	mm	6.35SQ	S	U	30.48 X 15.49	0.508	0.635	-	2.159	1.270	2.540	A440	0, 1, 12 or 24	0, 1, 12 or 24	KD-S78299-J
24	mm	7.87SQ	S	U	30.48 X 15.49	0.508	0.635	-	2.159	1.270	2.540	A440	0, 1, 9 or 12	0, 1, 9, 12 or 24	KD-S78382-H
24	mm	7.87SQ	S	U	30.48 X 15.49	0.508	0.635	-	2.159	1.270	2.540	A440	0	0	KD-S86840
24	mm	7.87SQ	S	U	30.48 X 15.49	0.508	0.635	-	2.159	1.270	2.540	A440	0, 1, 9 or 12	0, 1, 9 or 12	KD-S88460
24	mm	8.89 X 4.45	S	U	30.48 X 7.87	0.635	0.508	-	2.159	1.270	2.540	A440	0	0	KD-80160-D
24	mm	9.65SQ	S	U	30.48 X 15.49	0.635	0.635	-	2.286	1.270	2.540	A440	0	0 or 21	KD-78495-C
24	mm	9.65SQ	S	U	30.48 X 15.49	0.508	0.635	-	2.159	1.270	2.540	A440	0	0 or 1	KD-78516-D
24	mm	16.51 X 10.92	S	U	30.48 X 15.49	0.635	0.635	-	2.540	1.270	2.540	A473	SK=0	0	KD-83512-A
24	mm	16.51 X 10.92	S	U	30.48 X 15.49	0.635	0.635	-	2.540	1.270	2.540	A473	0	0	KD-S92459
28	mm	5.59SQ	S	U	35.56 X 15.49	0.508	0.635	-	2.159	1.270	2.540	A440	0	0	KD-S88909-A
28	mm	6.35SQ	S	U	35.56 X 15.49	0.508	0.635	-	2.159	1.270	2.540	A440	0, 1 or 14	0, 1 or 14	KD-78368-E
28	mm	6.35SQ	S	U	35.56 X 15.49	0.508	0.508	-	2.032	1.270	2.540	A440	0 or 1	0 or 1	KD-78373-B
28	mm	6.35 X 7.62	S	U	35.56 X 15.49	0.508	0.635	-	2.159	1.270	2.540	A440	0	0	KD-84523-B
28	mm	7.87SQ	S	U	35.56 X 15.49	0.508	0.508	-	2.032	1.270	2.540	A440	0 or 1	0 or 1	KD-78371-C
28	mm	7.87SQ	S	U	35.56 X 15.49	0.508	0.635	-	2.159	1.270	2.540	A440	0, 1 or 14	0, 1 or 14	KD-78385-G
28	mm	7.87SQ	S	U	35.56 X 15.49	0.508	0.635	-	2.159	1.270	2.540	A440	0	0	KD-81533-F
28	mm	8.89SQ	S	U	35.56 X 15.49	0.508	0.635	-	2.159	1.270	2.540	A440	0	0	KD-S83103-B
28	mm	9.91SQ	S	U	35.56 X 15.49	0.508	0.635	-	2.159	1.270	2.540	A440	0	0	KD-S86496
28	mm	10.01SQ	S	U	35.56 X 15.49	0.508	0.635	-	2.159	1.270	2.540	A440	0	0	KD-S82759-B
28	mm	10.41 X 7.62	S	U	35.56 X 15.49	0.635	0.635	-	2.286	1.270	2.540	A440	0	0	KD-S87577-A
28	mm	19.43 X 6.60	S	U	35.56 X 10.41	0.508	0.508	-	2.921	1.270	2.540	A440	1	1	KD-S87484-B
32	mm	11.43 X 5.59	S	U	40.64 X 7.87	0.508	0.635	-	2.159	1.270	2.540	A440	0	0	KD-S89472
40	mm	6.35SQ	S	U	50.8 X 15.49	0.635	0.635	-	2.286	1.270	2.540	A440	0	0	KD-77169-A
40	mm	6.35SQ	S	U	50.8 X 15.49	0.508	0.635	-	2.159	1.270	2.540	A440	0	0 or 1	KD-S78282-D
40	mm	6.35SQ	S	U	50.8 X 15.49	0.508	0.635	-	2.159	1.270	2.540	A440	0	0, 1 or 40	KD-S78286-D
40	mm	7.87SQ	S	U	50.8 X 15.49	0.508	0.635	-	2.159	1.270	2.540	A440	0 or 1	0, 1 or 40	KD-78163-E
40	mm	7.87SQ	S	U	50.8 X 15.49	0.508	0.635	-	2.159	1.270	2.540	A440	0	0 or 1	KD-78300-F
40	mm	10.16SQ	S	U	50.8 X 15.49	0.635	0.635	-	2.286	1.270	2.540	A440	0	0, 1 or 40	KD-78302-D

#=Connected pin number  
 N=No Metallization  
 0=No Connection

R0157C

UNIT : mm (If you prefer inch dimensions, please click here.)

LEAD COUNT	UNIT	CAVITY			OVERALL C x D	LAYER THICKNESS				LEAD		KYOCERA MATERIAL CODE A440: Black A473: White	CONNECTION		DRAWING NO.
		DIE CAV. A x B	W/B TIER SINGLE(S) DOUBLE(D)	UP(U) DOWN(D)		1ST	2ND	3RD	TOTAL	STAND OFF HEIGHT	PITCH		SEAL RING	DIE ATTACH	
40	mm	10.16SQ	S	U	50.8 X 15.49	0.508	0.635	-	2.159	1.270	2.540	A440	0	0	KD-80561-A
40	mm	11.43 X 8.89	S	U	50.8 X 15.49	0.635	0.635	-	2.286	1.270	2.540	A440	0	0	KD-S86A95-B
40	mm	13.34 X 10.16	S	U	50.8 X 15.49	0.635	0.635	-	2.286	1.270	2.540	A440	0	0	KD-S87609
48	mm	6.35SQ	S	U	60.96 X 15.49	0.508	0.635	-	2.159	1.270	2.540	A440	0	0	KD-80177-E
48	mm	7.87SQ	S	U	60.96 X 15.49	0.508	0.635	-	2.159	1.270	2.540	A440	0	0	KD-S87934-C
48	mm	10.16SQ	S	U	60.96 X 15.49	0.508	0.635	-	2.159	1.270	2.540	A440	0	0	KD-S78527-G
48	mm	12.25 X 10.16	S	U	60.96 X 15.49	0.508	0.635	-	2.159	1.270	2.540	A440	0	0	KD-84193-A
64	mm	14.00MIN X 11.00MIN	S	U	81.28 X 23.11	0.508	0.635	-	2.159	1.270	2.540	A440	N	1	KD-S79513-E