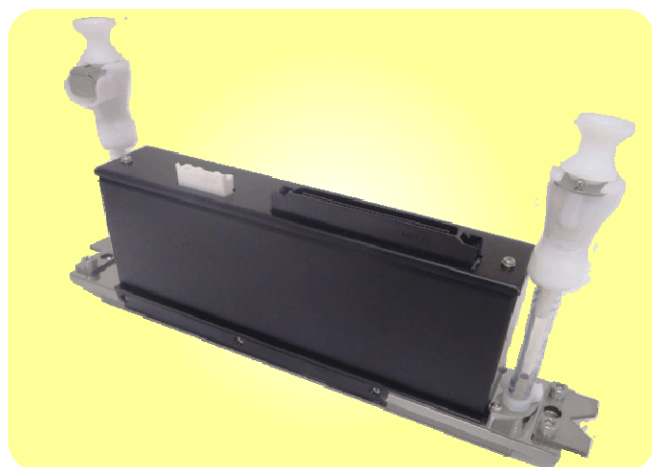
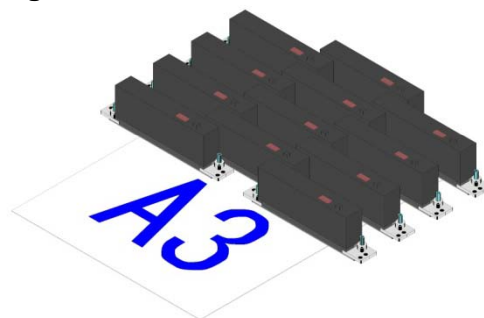


KJ4B-YH06WST-STDV

600 dpi high-speed inkjet printhead for water based inks.



KJ4B-YH06WST-STDV is inkjet printhead designed for super high speed single-pass and multi-pass applications with water based ink. It delivers 600 dpi × 600 dpi resolution at 100 m/min by making use of 2,656 nozzles arranged across 108 mm width.



FEATURES

- 108mm Wide Print Width
- 600 dpi High Density Nozzle Arrangement
- 100m/min High Speed (Single Pass Printing)

By employing wide print width, high density nozzle arrangement and highly responsive ink channel design, its productivity and stability are well recognized in such fields as textile printing, high speed roll fed press, additional printing, coding, and other industrial applications. Especially, ink-channel design was refined with this model and printing speed is increased by 33% compared with other current KJ4B models.

SPECIFICATIONS

Ink Type	Water based
Dimensions (W × D × H) *The height of the connector is contained	200 × 30 × 68.6 mm
Dry Weight	438 g
Total Nozzles*1	2,656
Standard Resolution	600 × 600 dpi
Effective Print Width*2	108.25 mm
Max. Drive Frequency	40 kHz
Max. Print Speed @ 600 dpi	1,666 mm/s (100 m/min)
Drop Volumes	5, 7, 12, 18 pl*3
Typical Ink Viscosity	5.0-6.0 mPa*s
Input Voltage	3.3 V for logic / 28 V for driving
Temperature Control	Reservoir heater and thermistor are equipped.

*1 Includes nozzles outside of the effective print width.

*2 Area in which nozzles are arranged in 600 dpi.

*3 18pl drop is available up to 24kHz.