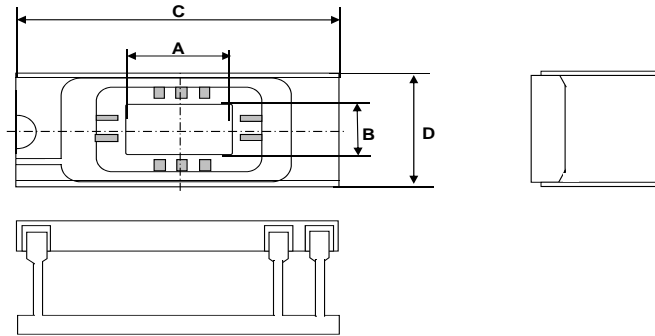


# KYOCERA C-DIP (CERAMIC DUAL INLINE PACKAGES)



Inquiries about this list



UNIT : mm [Click here for inch dimensions](#)

N=No Metallization  
0=No Connection

R0157A

LEAD COUNT	CAVITY			OVERALL C x D	LAYER THICKNESS				LEAD		KYOCERA MATERIAL CODE A440: Black A473: White	CONNECTION		DRAWING NO.
	DIE CAV. A x B	W/B TIER SINGLE(S) DOUBLE(D)	UP(U) DOWN(D)		1ST	2ND	3RD	TOTAL	STNAND OFF HEIGHT	PITCH		SEAL RING	DIE ATTACH	
8	3.05MIN X 4.42	S	U	10.29MAX X 7.87	0.508	0.635	-	2.159	0.889	2.540	A440	0	0	KD-S84832-B
8	5.59 X 4.42	S	U	13.21 X 7.87	0.508	0.635	-	2.159	0.889	2.540	A440	0	0	KD-S77047-G
8	5.59 X 4.42	S	U	13.21 X 7.87	0.508	0.889	-	2.413	0.889	2.540	A440	0	0	KD-S80398-B
8	5.59 X 4.42	S	U	13.21 X 7.87	0.508	0.635	-	2.159	0.889	2.540	A440	0	0	KD-S81129
8	5.59 X 4.42	S	U	13.21 X 7.87	0.508	0.635	-	2.159	0.889	2.540	A440	0	N	KD-S95083
14	4.57 X 2.67	S	U	18.03MAX X 7.87	0.635	0.508	-	2.159	0.889	2.540	A440	0	0	KD-S83690-A
14	4.57 X 3.81	S	U	18.03MAX X 7.87	0.635	0.508	-	2.159	0.889	2.540	A440	N	0	KD-S80285-A
14	4.57 X 3.81	S	U	17.78 X 7.87	0.508	0.635	-	2.159	0.889	2.540	A440	0	0	KD-S80290-B
14	5.59 X 3.96	S	U	17.78 X 7.87	0.508	0.508	-	2.032	0.889	2.540	A440	0	0	KD-S80292
14	5.59 X 3.96	S	U	17.78 X 7.87	0.508	0.508	-	2.032	0.889	2.540	A440	0	0	KD-S84241-A
14	5.59 X 4.11	S	U	19.00 X 7.87	0.508	0.635	-	2.159	0.889	2.540	A440	0	0	KD-S83128-A
14	5.59 X 4.31MIN	S	U	19.00 X 7.87	0.635	0.508	-	2.159	0.889	2.540	A473	0	0	KD-S87928
14	6.09 X 4.31MIN	S	U	20.32 X 7.87	0.635	0.508	-	2.413	0.889	2.540	A440	0, 1, 8 or 12	0, 1, 8 or 12	KD-S75091-H
14	6.09 X 4.45	S	U	20.32 X 7.87	0.635	0.508	-	2.159	0.889	2.540	A440	0	0	KD-S87912-A
14	6.60 X 4.31MIN	S	U	18.03MAX X 7.87	0.635	0.762	-	2.159	0.889	2.540	A440	0	0 or 3	KD-S80286-A
14	6.60 X 4.31MIN	S	U	18.03MAX X 7.87	0.635	0.635	-	2.032	0.889	2.540	A440	0	0	KD-S84617-A
14	6.60 X 4.31MIN	S	U	18.03MAX X 7.87	0.635	0.762	-	2.159	0.889	2.540	A440	0	0	KD-S87653-A
14	6.60 X 4.31MIN	S	U	18.03MAX X 7.87	0.635	0.762	-	2.159	0.889	2.540	A440	0	N	KD-S89702
14	7.62 X 4.57	S	U	18.03MAX X 7.87	0.508	0.635	-	2.159	0.889	2.540	A440	0	0	KD-S85765-A
14	7.62 X 4.83	S	U	18.03MAX X 7.87	0.508	0.635	-	2.159	0.889	2.540	A440	0	0	KD-S82682-A
14	8.13 X 4.31MIN	S	U	20.32 X 7.87	0.635	0.508	-	2.159	0.889	2.540	A440	0	0	KD-S75119-F
16	4.11 X 3.51	S	U	20.32 X 7.87	0.508	0.508	-	2.159	0.889	2.540	A440	0	0	KD-S89602-A
16	4.57 X 3.81	S	U	20.32MAX X 7.87	0.635	0.508	-	2.159	0.889	2.540	A440	0	0	KD-S76129-B
16	5.08 X 4.32	S	U	20.32 X 7.87	0.635	0.635	-	2.286	0.889	2.540	A440	0	0	KD-S78343
16	5.59 X 3.96	S	U	20.32 X 7.87	0.635	0.762	-	2.159	0.889	2.540	A440	0	0	KD-S83332-A
16	6.10MIN X 4.19MIN	S	U	20.32 X 7.87	0.635	0.635	-	2.286	0.889	2.540	A440	0	8	KD-S81625-B

UNIT : mm [Click here for inch dimensions](#)

N=No Metallization  
0=No Connection

R0157A

LEAD COUNT	CAVITY			OVERALL C x D	LAYER THICKNESS				LEAD		KYOCERA MATERIAL CODE A440: Black A473: White	CONNECTION		DRAWING NO.
	DIE CAV. A x B	W/B TIER SINGLE(S) DOUBLE(D)	UP(U) DOWN(D)		1ST	2ND	3RD	TOTAL	STNAND OFF HEIGHT	PITCH		SEAL RING	DIE ATTACH	
16	6.10MIN X 4.32MIN	S	U	20.32 X 7.87	0.635	0.508	-	2.159	0.889	2.540	A440	0	0, 1, 2, 8 or 10	KD-S78467-A
16	6.10MIN X 4.32MIN	S	U	20.32 X 7.87	0.508	0.508	-	2.032	0.889	2.540	A440	N	0	KD-S80050-C
16	6.10 X 4.11	S	U	20.32 X 7.87	0.508	0.635	-	2.159	0.889	2.540	A440	0	0	KD-S83229-A
16	6.10 X 4.11	S	U	20.32 X 7.87	0.508	0.635	-	2.159	0.889	2.540	A440	N	0	KD-S87443
16	6.10 X 4.32MIN	S	U	20.32 X 7.87	0.635	0.508	-	2.159	0.889	2.540	A440	0, 1, 5, 7, 8 or 10	0, 1, 5, 7, 8 or 10	KD-S75092-G
16	6.10 X 4.32MIN	S	U	20.32 X 7.87	0.635	0.508	-	2.159	0.889	2.540	A440	0	0	KD-S76135-G
16	6.10 X 4.32MIN	S	U	20.32MAX X 7.87	0.508	0.635	-	2.159	0.889	2.540	A440	0	0	KD-S85298-A
16	6.10 X 4.42	S	U	20.32 X 7.87	0.508	0.635	-	2.159	0.889	2.540	A440	0, 1 or 5	0, 1 or 5	KD-S77048-G
16	6.10 X 4.42	S	U	20.32 X 7.87	0.508	0.635	-	2.159	0.889	2.540	A440	N	0	KD-S77240-A
16	6.10 X 4.42	S	U	20.32 X 7.87	0.508	0.635	-	2.159	0.889	2.540	A440	0	0	KD-S85363-A
16	7.11 X 4.32	S	U	20.32 X 7.87	0.635	0.508	-	2.159	0.889	2.540	A440	0 or 1	0 or 1	KD-S77010-B
16	7.11 X 5.59	S	U	20.32 X 7.87	0.635	0.508	-	2.159	0.889	2.540	A440	0 or 1	0 or 1	KD-S78138-E
16	7.62 X 4.57	S	U	20.32MAX X 7.87	0.508	0.508	-	2.159	0.889	2.540	A440	0	0	KD-S85766
16	7.87SQ	S	U	20.32 X 15.49	0.508	0.508	-	2.032	0.889	2.540	A440	0	0	KD-S78238-A
16	8.13 X 4.32MIN	S	U	20.32 X 7.87	0.635	0.508	-	2.159	0.889	2.540	A440	0	0	KD-S80006-C
16	8.13 X 4.32MIN	S	U	20.32 X 7.87	0.508	0.508	-	1.905	0.889	2.540	A440	0	0 or 1	KD-S75087-C
16	8.13 X 4.32MIN	S	U	20.32 X 7.87	0.635	0.508	-	2.032	0.889	2.540	A440	0	0	KD-S76220-C
16	8.13 X 4.32MIN	S	U	20.32 X 7.87	0.635	0.762	-	2.413	0.889	2.540	A440	0	0	KD-S82422-A
16	8.13 X 4.42	S	U	20.32 X 7.87	0.508	0.508	-	2.159	0.889	2.540	A440	0	0	KD-S84002-A
16	8.89 X 4.57	S	U	20.32 X 7.87	0.635	0.508	-	2.159	0.889	2.540	A440	0	0	KD-S81086-B
16	9.53 X 5.59	S	U	20.32 X 7.87	0.635	0.508	-	2.159	0.889	2.540	A440	0 or 1	0 or 1	KD-S78137-C
16	10.16 X 5.61	S	U	20.32 X 7.87	0.508	0.635	-	2.159	0.889	2.540	A440	0	0	KD-S81700-A
16	10.16 X 5.61	S	U	20.32 X 7.87	0.508	0.635	-	2.159	0.889	2.540	A440	0	0	KD-S82398-B
16	12.45 X 5.72	S	U	20.32 X 7.87	0.508	0.635	-	2.159	0.889	2.540	A440	0	0	KD-S82010-A
18	5.59 X 4.32	S	U	22.86 X 7.87	0.635	0.508	-	2.159	0.889	2.540	A440	0, 1, 5, 8, 10 or 14	0, 1, 5, 8, 10 or 14	KD-S77309-D
18	5.59 X 4.32	S	U	22.86 X 7.87	0.508	0.508	-	2.032	0.889	2.540	A440	0 or 3	0 or 3	KD-S79325-A
18	5.69 X 4.42	S	U	22.86 X 7.87	0.635	0.508	-	2.159	0.889	2.540	A440	0	0, 1 or 10	KD-S76092-B
18	5.99 X 4.37	S	U	22.86 X 7.87	0.508	0.635	-	2.159	0.889	2.540	A440	0 or 1	0 or 1	KD-S77049-D
18	6.20 X 4.42	S	U	22.86 X 7.87	0.635	0.508	-	2.159	0.889	2.540	A440	0	0	KD-S83342
18	6.30 X 4.11	S	U	22.86 X 7.87	0.508	0.635	-	2.159	0.889	2.540	A440	0	0	KD-S82396
18	6.73 X 4.42	S	U	22.86 X 7.87	0.508	0.635	-	2.159	0.889	2.540	A440	0	0 or 1	KD-S77032-G
18	6.73 X 4.42	S	U	22.86 X 7.87	0.635	0.508	-	2.159	0.889	2.540	A440	0	0	KD-S82281-A
18	7.62 X 4.57	S	U	22.86MAX X 7.87	0.508	0.635	-	2.159	0.889	2.540	A440	0	0	KD-S86634
18	8.00 X 5.61	S	U	22.86 X 7.87	0.508	0.635	-	2.159	0.889	2.540	A440	0	0	KD-S78530-C
18	8.13 X 4.45	S	U	22.86 X 7.87	0.508	0.635	-	2.159	0.889	2.540	A440	0	0 or 1	KD-S77175-F
18	8.13 X 4.45	S	U	22.86 X 7.87	0.508	0.635	-	2.159	0.889	2.540	A440	0	0	KD-S82662
18	12.12 X 5.74	S	U	22.86 X 7.87	0.711	0.711	-	2.438	0.889	2.540	A440	0	0	KD-S84047
18	12.19 X 4.45	S	U	22.86 X 7.87	0.508	0.635	-	2.159	0.889	2.540	A440	0	0	KD-S84779
18	12.19 X 5.08	S	U	22.86 X 7.87	0.635	0.635	-	2.286	0.889	2.540	A440	0	0	KD-S86302-B

UNIT : mm    [Click here for inch dimensions](#)

N=No Metallization  
0=No Connection

R0157A

LEAD COUNT	CAVITY			OVERALL C x D	LAYER THICKNESS				LEAD		KYOCERA MATERIAL CODE A440: Black A473: White	CONNECTION		DRAWING NO.
	DIE CAV. A x B	W/B TIER SINGLE(S) DOUBLE(D)	UP(U) DOWN(D)		1ST	2ND	3RD	TOTAL	STNAND OFF HEIGHT	PITCH		SEAL RING	DIE ATTACH	
20	5.46 X 4.06	S	U	25.4 X 7.87	0.508	0.635	-	2.159	0.889	2.540	A440	0	0	KD-S84357
20	5.46 X 4.42	S	U	25.4 X 7.87	0.508	0.635	-	2.159	0.889	2.540	A440	0	0	KD-S77050-D
20	6.35 X 3.81MIN	S	U	25.4 X 7.87	0.508	0.508	-	1.524	0.889	2.540	A440	0	0	KD-S83438
20	6.60 X 4.45	S	U	25.4 X 7.87	0.635	0.508	-	2.159	0.889	2.540	A440	0	0 or 1	KD-S76250-C
20	6.60 X 4.45	S	U	25.4 X 7.87	0.508	0.635	-	2.159	0.889	2.540	A440	0	0	KD-S82447-A
20	6.60 X 4.83	S	U	25.4 X 7.87	0.508	0.508	-	2.032	0.889	2.540	A440	0	0	KD-S85546-B
20	8.13 X 4.45	S	U	25.4 X 7.87	0.508	0.635	-	2.159	0.889	2.540	A440	0	0	KD-S80383-B
20	8.13 X 4.45	S	U	25.4 X 7.87	0.508	0.635	-	2.159	0.889	2.540	A440	0	0	KD-S86832
20	9.53 X 5.08	S	U	25.4 X 7.87	0.635	0.635	-	2.286	0.889	2.540	A440	0	0	KD-S87735-A
22	5.08SQ	S	U	27.43 X 10.41	0.508	0.635	-	2.159	0.965	2.540	A440	0	0	KD-S83271-C
22	5.21 X 4.70	S	U	27.43 X 10.41	0.508	0.508	-	2.032	0.965	2.540	A440	0 or 1	0 or 1	KD-S77261-D
22	6.35 X 5.59	S	U	27.43 X 10.41	0.635	0.635	-	2.032	0.965	2.540	A440	0	0	KD-S82235
22	7.11 X 6.35	S	U	27.43 X 10.41	0.635	0.635	-	2.286	0.965	2.540	A440	17	17	KD-S87500
22	7.11 X 6.60	S	U	27.43 X 10.41	0.635	0.635	-	2.159	0.965	2.540	A440	0	0	KD-S77262-E
22	7.11 X 6.60	S	U	27.43 X 10.41	0.508	0.635	-	2.159	0.965	2.540	A440	0	0	KD-S78409-C
22	7.87 X 6.60	S	U	27.43 X 10.41	0.635	0.508	-	2.159	0.965	2.540	A440	0, 1, 6 or 22	0, 1, 6 or 22	KD-S75349-E
22	8.13 X 4.45	S	U	27.94 X 7.87	0.508	0.635	-	2.159	0.965	2.540	A440	9	0	KD-S85808
22	10.01 X 6.20	S	U	27.43 X 10.41	0.635	0.635	-	2.159	0.965	2.540	A440	0	0	KD-S84421-B
24	5.33SQ	S	U	30.48 X 15.49	0.508	0.635	-	2.159	1.270	2.540	A440	0	0	KD-S82425-B
24	5.33SQ	S	U	30.48 X 15.49	0.508	0.635	-	2.159	1.270	2.540	A440	N	0	KD-S85804
24	6.35SQ	S	U	30.48 X 15.49	0.508	0.635	-	2.159	1.270	2.540	A440	0, 1, 12 or 24	0, 1, 12 or 24	KD-S78299-J
24	6.35SQ	S	U	30.48 X 15.49	0.508	0.508	-	2.032	1.270	2.540	A440	0	0	KD-S78305-A
24	6.35SQ	S	U	30.48 X 15.49	0.508	0.635	-	2.159	1.270	2.540	A440	0	0	KD-S81036
24	6.35SQ	S	U	30.48 X 15.49	0.508	0.737	-	2.286	1.270	2.540	A440	0	0	KD-S85992
24	6.35SQ	S	U	30.48 X 15.49	0.635	0.635	-	2.286	1.270	2.540	A440	0	0	KD-S89808-B
24	7.62SQ	S	U	30.48 X 15.49	0.508	0.635	-	2.159	1.270	2.540	A440	0	0	KD-S79562-A
24	7.62SQ	S	U	30.48 X 15.49	0.508	0.635	-	2.159	1.270	2.540	A440	0	0	KD-S82061
24	7.62 X 4.95MIN	S	U	30.48 X 7.87	0.635	0.508	-	2.159	1.270	2.540	A440	0	0	KD-S83666
24	7.87SQ	S	U	30.48 X 15.49	0.508	0.635	-	2.159	1.270	2.540	A440	0, 1, 9 or 12	0, 1, 9, 12 or 24	KD-S78382-H
24	7.87SQ	S	U	30.48 X 15.49	0.508	0.762	-	2.286	1.270	2.540	A440	0	0	KD-S84015-A
24	7.87SQ	S	U	30.48 X 15.49	0.508	0.635	-	2.159	1.270	2.540	A440	0	0	KD-S86840
24	7.87SQ	S	U	30.48 X 15.49	0.762	0.635	-	2.159	1.270	2.540	A440	0	0 or 14	KD-S86898-B
24	7.87SQ	S	U	30.48 X 15.49	0.508	0.635	-	2.159	1.270	2.540	A440	0, 1, 9 or 12	0, 1, 9 or 12	KD-S88460
24	8.89 X 4.19	S	U	30.48 X 7.87	0.635	0.508	-	2.159	1.270	2.540	A440	0	0	KD-S84728
24	8.89 X 4.45	S	U	30.48 X 7.87	0.635	0.508	-	2.159	1.270	2.540	A440	0	0	KD-S80160-D
24	9.65SQ	S	U	30.48 X 15.49	0.635	0.635	-	2.286	1.270	2.540	A440	0	0 or 21	KD-S78495-C
24	9.65SQ	S	U	30.48 X 15.49	0.508	0.635	-	2.159	1.270	2.540	A440	0	0 or 1	KD-S78516-D
24	9.91 X 5.59	S	U	30.48 X 7.87	0.508	0.635	-	2.159	1.270	2.540	A440	0	0	KD-S86789-C
24	10.92 X 5.59	S	U	30.48 X 7.87	0.508	0.635	-	2.159	1.270	2.540	A440	0	0	KD-S84459-B

UNIT : mm    [Click here for inch dimensions](#)

N=No Metallization  
0=No Connection

R0157A

LEAD COUNT	CAVITY			OVERALL C x D	LAYER THICKNESS				LEAD		KYOCERA MATERIAL CODE A440: Black A473: White	CONNECTION		DRAWING NO.
	DIE CAV. A x B	W/B TIER SINGLE(S) DOUBLE(D)	UP(U) DOWN(D)		1ST	2ND	3RD	TOTAL	STNAND OFF HEIGHT	PITCH		SEAL RING	DIE ATTACH	
24	12.7 X 4.32	S	U	30.48 X 7.87	0.381	0.762	-	2.159	1.270	2.540	A440	0	0	KD-S86927-A
24	12.7 X 9.60	S	U	30.48 X 15.49	0.635	0.635	-	2.286	1.270	2.540	A440	0	0	KD-S82228
24	16.51SQ	S	U	30.48 X 15.49	0.635	0.635	-	2.540	1.270	2.540	A473	0	0	KD-S83512-A
24	16.51SQ	S	U	30.48 X 15.49	0.635	0.635	-	2.540	1.270	2.540	A473	0	0	KD-S92459
28	5.59SQ	S	U	35.56 X 15.49	0.508	0.635	-	2.159	1.270	2.540	A440	0	0	KD-S88909-A
28	6.35SQ	S	U	35.56 X 15.49	0.508	0.635	-	2.159	1.270	2.540	A440	0, 1 or 14	0, 1 or 14	KD-S78368-E
28	6.35SQ	S	U	35.56 X 15.49	0.508	0.508	-	2.032	1.270	2.540	A440	0 or 1	0 or 1	KD-S78373-B
28	6.35SQ	S	U	35.56 X 15.49	0.508	0.635	-	2.159	1.270	2.540	A440	0	0	KD-S80065
28	6.35SQ	S	U	35.56 X 15.49	0.508	0.635	-	2.159	1.270	2.540	A440	0	0	KD-S85333-B
28	6.35SQ	S	U	35.56 X 15.49	0.635	0.635	-	2.286	1.270	2.540	A440	0	0	KD-S90444
28	6.35 X 7.62	S	U	35.56 X 15.49	0.508	0.635	-	2.159	1.270	2.540	A440	0	0	KD-S84523-B
28	7.87SQ	S	U	35.56 X 15.49	0.508	0.508	-	2.032	1.270	2.540	A440	0 or 1	0 or 1	KD-S78371-C
28	7.87SQ	S	U	35.56 X 15.49	0.508	0.635	-	2.159	1.270	2.540	A440	0, 1 or 14	0, 1 or 14	KD-S78385-F
28	7.87SQ	S	U	35.56 X 15.49	0.508	0.508	-	2.032	1.270	2.540	A440	0 or 1	0 or 1	KD-S78436
28	7.87SQ	S	U	35.56 X 15.49	0.635	0.762	-	2.159	1.270	2.540	A440	0	0	KD-S79275-A
28	7.87SQ	S	U	35.56 X 15.49	0.508	0.635	-	2.159	1.270	2.540	A440	0 or 1	0 or 1	KD-S80260-D
28	7.87SQ	S	U	35.56 X 15.49	0.635	0.635	-	2.286	1.270	2.540	A440	0	0	KD-S80501-B
28	7.87SQ	S	U	35.56 X 15.49	0.508	0.635	-	2.159	1.270	2.540	A440	0	0	KD-S81533-E
28	7.87SQ	S	U	35.56 X 15.49	0.635	0.762	-	2.159	1.270	2.540	A440	0	0	KD-S86130
28	8.89SQ	S	U	35.56 X 15.49	0.508	0.635	-	2.159	1.270	2.540	A440	0 or 1	0 or 1	KD-S81303
28	8.89SQ	S	U	35.56 X 15.49	0.508	0.635	-	2.159	1.270	2.540	A440	0	0	KD-S83103-A
28	8.89SQ	S	U	35.56 X 15.49	0.635	0.762	-	2.413	1.270	2.540	A440	0	1	KD-S90753-A
28	9.91SQ	S	U	35.56 X 15.49	0.508	0.635	-	2.159	1.270	2.540	A440	0	0	KD-S86496
28	10.01SQ	S	U	35.56 X 15.49	0.508	0.635	-	2.159	1.270	2.540	A440	0	0	KD-S82759-B
28	10.41 X 7.62	S	U	35.56 X 15.49	0.635	0.635	-	2.286	1.270	2.540	A440	0 or 1	0 or 1	KD-S79136-C
28	10.41 X 7.62	S	U	35.56 X 15.49	0.635	0.635	-	2.286	1.270	2.540	A440	0	0	KD-S83249-B
28	10.41 X 7.62	S	U	35.56 X 15.49	0.635	0.635	-	2.286	1.270	2.540	A440	0	0	KD-S87577-A
28	10.41 X 7.62	S	U	35.56 X 15.49	0.635	1.016	-	2.667	1.270	2.540	A440	0	0	KD-S91464
28	10.41 X 8.13	S	U	35.56 X 15.49	0.635	0.635	-	2.286	1.270	2.540	A440	N	0	KD-S87559
28	11.43 X 5.59	S	U	35.56 X 7.87	0.508	0.635	-	2.159	1.270	2.540	A440	0	0	KD-S89470-B
28	19.43 X 6.60	S	U	35.56 X 10.41	0.508	0.508	-	2.921	1.270	2.540	A440	1	1	KD-S87484-B
32	11.43 X 5.59	S	U	40.64 X 7.87	0.508	0.635	-	2.159	1.270	2.540	A440	0	0	KD-S89472
40	4.83SQ	S	U	50.8 X 15.49	0.508	0.635	-	2.159	1.270	2.540	A440	0	0	KD-S80644-C
40	4.83SQ	S	U	50.8 X 15.49	0.508	0.635	-	2.159	1.270	2.540	A440	0	0	KD-S85737-A
40	6.15 X 4.32	S	U	50.8 X 15.49	0.508	0.508	-	2.032	1.270	2.540	A440	0	0	KD-S85C19-A
40	6.35SQ	S	U	50.8 X 15.49	0.635	0.635	-	2.286	1.270	2.540	A440	0	0	KD-S77169-A
40	6.35SQ	S	U	50.8 X 15.49	0.508	0.635	-	2.159	1.270	2.540	A440	0	0 or 1	KD-S78282-D
40	6.35SQ	S	U	50.8 X 15.49	0.508	0.508	-	2.032	1.270	2.540	A440	0, 1 or 40	0, 1 or 40	KD-S78346-B
40	6.35SQ	S	U	50.8 X 15.49	0.508	0.635	-	2.159	1.270	2.540	A440	0	0, 1 or 40	KD-S78286-D

UNIT : mm [Click here for inch dimensions](#)

 N=No Metallization  
 0=No Connection

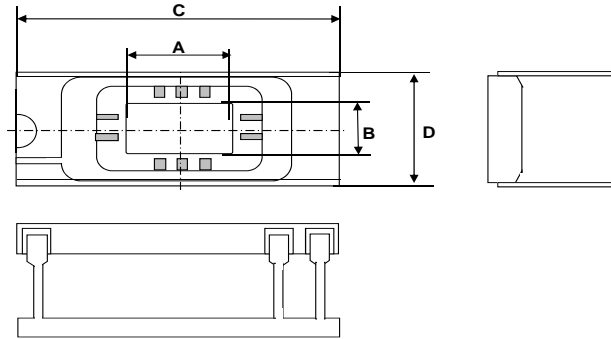
R0157A

LEAD COUNT	CAVITY			OVERALL C x D	LAYER THICKNESS				LEAD		KYOCERA MATERIAL CODE A440: Black A473: White	CONNECTION		DRAWING NO.
	DIE CAV. A x B	W/B TIER SINGLE(S) DOUBLE(D)	UP(U) DOWN(D)		1ST	2ND	3RD	TOTAL	STNAND OFF HEIGHT	PITCH		SEAL RING	DIE ATTACH	
40	7.87SQ	S	U	50.8 X 15.49	0.508	0.635	-	2.159	1.270	2.540	A440	0 or 1	0, 1 or 40	KD-S78163-E
40	7.87SQ	S	U	50.8 X 15.49	0.508	0.508	-	2.032	1.270	2.540	A440	0 or 1	0 or 1	KD-S78258-C
40	7.87SQ	S	U	50.8 X 15.49	0.508	0.635	-	2.159	1.270	2.540	A440	0	0 or 1	KD-S78300-F
40	7.87SQ	S	U	50.8 X 15.49	0.508	0.762	-	2.032	1.270	2.540	A440	0	0	KD-S80338
40	8.64SQ	S	U	50.8 X 15.49	0.508	0.635	-	2.159	1.270	2.540	A440	0 or 1	0 or 1	KD-S79190-C
40	8.64SQ	S	U	50.8 X 15.49	0.508	0.508	-	2.032	1.270	2.540	A440	0	0	KD-S82449-C
40	9.40SQ	S	U	50.8 X 15.49	0.635	0.635	-	2.286	1.270	2.540	A440	0 or 1	0 or 1	KD-S80462-B
40	9.63SQ	S	U	50.8 X 15.49	0.635	0.635	-	2.286	1.270	2.540	A440	0	0	KD-S85322-B
40	9.65 X 8.89	S	U	50.8 X 15.49	0.635	0.635	-	2.286	1.270	2.540	A440	0 or 1	0 or 1	KD-S80532-B
40	10.16SQ	S	U	50.8 X 15.49	0.635	0.635	-	2.286	1.270	2.540	A440	0	0, 1 or 40	KD-S78302-D
40	10.16SQ	S	U	50.8 X 15.49	0.508	0.635	-	2.159	1.270	2.540	A440	0	0	KD-S80561-A
40	10.16SQ	S	U	50.8 X 15.49	0.635	0.635	-	2.286	1.270	2.540	A440	0	0	KD-S84434-A
40	10.16 X 9.65	S	U	50.8 X 15.49	0.635	0.635	-	2.286	1.270	2.540	A440	0	0	KD-S84775-A
40	11.43 X 8.89	S	U	50.8 X 15.49	0.635	0.635	-	2.286	1.270	2.540	A440	0	0	KD-S86A95-B
40	13.34 X 10.16	S	U	50.8 X 15.49	0.635	0.635	-	2.286	1.270	2.540	A440	0	0	KD-S87609
48	6.35SQ	S	U	60.96 X 15.49	0.508	0.635	-	2.159	1.270	2.540	A440	0	0	KD-80177-E
48	7.87SQ	S	U	60.96 X 15.49	0.508	0.635	-	2.159	1.270	2.540	A440	0 or 1	0 or 1	KD-S77158-G
48	7.87SQ	S	U	60.96 X 15.49	0.508	0.635	-	2.159	1.270	2.540	A440	0	0	KD-S87934-C
48	8.41 X 8.00	S	U	60.96 X 15.49	0.508	0.635	-	2.159	1.270	2.540	A440	0	0	KD-S83567
48	8.64SQ	S	U	60.96 X 15.49	0.508	0.635	-	2.159	1.270	2.540	A440	0	0	KD-S82293-C
48	8.89SQ	S	U	60.96 X 15.49	0.508	0.635	-	2.159	1.270	2.540	A440	1	0 or 1	KD-S79237-F
48	9.40SQ	S	U	60.96 X 15.49	0.508	0.635	-	2.159	1.270	2.540	A440	0	0	KD-S84514
48	10.16SQ	S	U	60.96 X 15.49	0.508	0.635	-	2.159	1.270	2.540	A440	0	0	KD-S78527-G
48	10.92 X 10.16	S	U	60.96 X 15.49	0.508	0.635	-	2.159	1.270	2.540	A440	0	0	KD-S85870
48	12.25 X 10.16	S	U	60.96 X 15.49	0.508	0.635	-	2.159	1.270	2.540	A440	0	0	KD-S84193-A
64	6.99SQ	S	U	81.28 X 23.11	0.508	0.635	-	2.159	1.270	2.540	A440	0	0	KD-S85318
64	7.87SQ	S	U	81.28 X 23.11	0.508	0.635	-	2.159	1.270	2.540	A440	0	0	KD-S85735
64	8.89SQ	S	U	81.28 X 23.11	0.508	0.635	-	2.159	1.270	2.540	A440	0	0	KD-S82806-A
64	10.16SQ	S	U	81.28 X 23.11	0.508	0.635	-	2.159	1.270	2.540	A440	0	0	KD-S83665
64	10.16SQ	S	U	81.28 X 23.11	0.508	0.635	-	2.159	1.270	2.540	A440	0	0	KD-S84566-A
64	14.00MIN X 11.00MIN	S	U	81.28 X 23.11	0.508	0.635	-	2.159	1.270	2.540	A440	N	1	KD-S79513-C

# KYOCERA C-DIP (CERAMIC DUAL INLINE PACKAGES)



Inquiries about this list



UNIT : inch [Click here for metric dimensions](#)

N=No Metallization  
0=No Connection

R0157A

LEAD COUNT	CAVITY			OVERALL C x D	LAYER THICKNESS				LEAD		KYOCERA MATERIAL CODE A440: Black A473: White	CONNECTION		DRAWING NO.
	DIE CAV. A x B	W/B TIER SINGLE(S) DOUBLE(D)	UP(U) DOWN(D)		1ST	2ND	3RD	TOTAL	STNAND OFF HEIGHT	PITCH		SEAL RING	DIE ATTACH	
8	.120MIN. X .174	S	U	.405MAX. X .310	.020	.025	-	.085	.035	.100	A440	0	0	KD-S84832-B
8	.220 X .174	S	U	.520 X .310	.020	.025	-	.085	.035	.100	A440	0	0	KD-S77047-G
8	.220 X .174	S	U	.520 X .310	.020	.035	-	.095	.035	.100	A440	0	0	KD-S80398-B
8	.220 X .174	S	U	.520 X .310	.020	.025	-	.085	.035	.100	A440	0	0	KD-S81129
8	.220 X .174	S	U	.520 X .310	.020	.025	-	.085	.035	.100	A440	0	N	KD-S95083
14	.180 X .105	S	U	.710MAX. X .310	.025	.020	-	.085	.035	.100	A440	0	0	KD-S83690-A
14	.180 X .150	S	U	.710MAX. X .310	.025	.020	-	.085	.035	.100	A440	N	0	KD-S80285-A
14	.180 X .150	S	U	.700 X .310	.020	.025	-	.085	.035	.100	A440	0	0	KD-S80290-B
14	.220 X .156	S	U	.700 X .310	.020	.020	-	.080	.035	.100	A440	0	0	KD-S80292
14	.220 X .156	S	U	.700 X .310	.020	.020	-	.080	.035	.100	A440	0	0	KD-S84241-A
14	.220 X .162	S	U	.748 X .310	.020	.025	-	.085	.035	.100	A440	0	0	KD-S83128-A
14	.220 X .170MIN.	S	U	.748 X .310	.025	.020	-	.085	.035	.100	A473	0	0	KD-S87928
14	.240 X .170MIN.	S	U	.800 X .310	.025	.020	-	.095	.035	.100	A440	0, 1, 8 or 12	0, 1, 8 or 12	KD-S75091-H
14	.240 X .175	S	U	.800 X .310	.025	.020	-	.085	.035	.100	A440	0	0	KD-S87912-A
14	.260 X .170MIN.	S	U	.710MAX. X .310	.025	.030	-	.085	.035	.100	A440	0	0 or 3	KD-S80286-A
14	.260 X .170MIN.	S	U	.710MAX. X .310	.025	.025	-	.080	.035	.100	A440	0	0	KD-S84617-A
14	.260 X .170MIN.	S	U	.710MAX. X .310	.025	.030	-	.085	.035	.100	A440	0	0	KD-S87653-A
14	.260 X .170MIN.	S	U	.710MAX. X .310	.025	.030	-	.085	.035	.100	A440	0	N	KD-S89702
14	.300 X .180	S	U	.710MAX. X .310	.020	.025	-	.085	.035	.100	A440	0	0	KD-S85765-A
14	.300 X .190	S	U	.710MAX. X .310	.020	.025	-	.085	.035	.100	A440	0	0	KD-S82682-A
14	.320 X .170MIN.	S	U	.800 X .310	.025	.020	-	.085	.035	.100	A440	0	0	KD-S75119-F
16	.162 X .138	S	U	.800 X .310	.020	.020	-	.085	.035	.100	A440	0	0	KD-S89602-A
16	.180 X .150	S	U	.800MAX. X .310	.025	.020	-	.085	.035	.100	A440	0	0	KD-S76129-B
16	.200 X .170	S	U	.800 X .310	.025	.025	-	.090	.035	.100	A440	0	0	KD-S78343
16	.220 X .156	S	U	.800 X .310	.025	.030	-	.085	.035	.100	A440	0	0	KD-S83332-A

LEAD COUNT	CAVITY			OVERALL C x D	LAYER THICKNESS				LEAD		KYOCERA MATERIAL CODE A440: Black A473: White	CONNECTION		DRAWING NO.
	DIE CAV. A x B	W/B TIER SINGLE(S) DOUBLE(D)	UP(U) DOWN(D)		1ST	2ND	3RD	TOTAL	STNAND OFF HEIGHT	PITCH		SEAL RING	DIE ATTACH	
16	.240MIN. X .165MIN.	S	U	.800 X .310	.025	.025	-	.090	.035	.100	A440	0	8	KD-S81625-B
16	.240MIN. X .170MIN.	S	U	.800 X .310	.025	.020	-	.085	.035	.100	A440	0	0, 1, 2, 8 or 10	KD-S78467-A
16	.240MIN. X .170MIN.	S	U	.800 X .310	.020	.020	-	.080	.035	.100	A440	N	0	KD-S80050-C
16	.240 X .162	S	U	.800 X .310	.020	.025	-	.085	.035	.100	A440	0	0	KD-S83229-A
16	.240 X .162	S	U	.800 X .310	.020	.025	-	.085	.035	.100	A440	N	0	KD-S87443
16	.240 X .170MIN.	S	U	.800 X .310	.025	.020	-	.085	.035	.100	A440	0, 1, 5, 7, 8 or 10	0, 1, 5, 7, 8 or 10	KD-S75092-G
16	.240 X .170MIN.	S	U	.800 X .310	.025	.020	-	.085	.035	.100	A440	0	0	KD-S76135-G
16	.240 X .170MIN.	S	U	.800MAX. X .310	.020	.025	-	.085	.035	.100	A440	0	0	KD-S85298-A
16	.240 X .174	S	U	.800 X .310	.020	.025	-	.085	.035	.100	A440	0, 1 or 5	0, 1 or 5	KD-S77048-G
16	.240 X .174	S	U	.800 X .310	.020	.025	-	.085	.035	.100	A440	N	0	KD-S77240-A
16	.240 X .174	S	U	.800 X .310	.020	.025	-	.085	.035	.100	A440	0	0	KD-S85363-A
16	.280 X .170	S	U	.800 X .310	.025	.020	-	.085	.035	.100	A440	0 or 1	0 or 1	KD-S77010-B
16	.280 X .220	S	U	.800 X .310	.025	.020	-	.085	.035	.100	A440	0 or 1	0 or 1	KD-S78138-E
16	.300 X .180	S	U	.810MAX. X .310	.020	.020	-	.085	.035	.100	A440	0	0	KD-S85766
16	.310SQ	S	U	.800 X .610	.020	.020	-	.080	.035	.100	A440	0	0	KD-S78238-A
16	.320 X .170MIN	S	U	.800 X .310	.025	.020	-	.085	.035	.100	A440	0	0	KD-S80006-C
16	.320 X .170MIN.	S	U	.800 X .310	.020	.020	-	.075	.035	.100	A440	0	0 or 1	KD-S75087-C
16	.320 X .170MIN.	S	U	.800 X .310	.025	.020	-	.080	.035	.100	A440	0	0	KD-S76220-C
16	.320 X .170MIN.	S	U	.800 X .310	.025	.030	-	.095	.035	.100	A440	0	0	KD-S82422-A
16	.320 X .174	S	U	.800 X .310	.020	.020	-	.085	.035	.100	A440	0	0	KD-S84002-A
16	.350 X .180	S	U	.800 X .310	.025	.020	-	.085	.035	.100	A440	0	0	KD-S81086-B
16	.375 X .220	S	U	.800 X .310	.025	.020	-	.085	.035	.100	A440	0 or 1	0 or 1	KD-S78137-C
16	.400 X .221	S	U	.800 X .310	.020	.025	-	.085	.035	.100	A440	0	0	KD-S81700-A
16	.400 X .221	S	U	.800 X .310	.020	.025	-	.085	.035	.100	A440	0	0	KD-S82398-B
16	.490 X .225	S	U	.800 X .310	.020	.025	-	.085	.035	.100	A440	0	0	KD-S82010-A
18	.220 X .170	S	U	.900 X .310	.025	.020	-	.085	.035	.100	A440	0, 1, 5, 8, 10 or 14	0, 1, 5, 8, 10 or 14	KD-S77309-D
18	.220 X .170	S	U	.900 X .310	.020	.020	-	.080	.035	.100	A440	0 or 3	0 or 3	KD-S79325-A
18	.224 X .174	S	U	.900 X .310	.025	.020	-	.085	.035	.100	A440	0	0, 1 or 10	KD-S76092-B
18	.236 X .172	S	U	.900 X .310	.020	.025	-	.085	.035	.100	A440	0 or 1	0 or 1	KD-S77049-D
18	.244 X .174	S	U	.900 X .310	.025	.020	-	.085	.035	.100	A440	0	0	KD-S83342
18	.248 X .162	S	U	.900 X .310	.020	.025	-	.085	.035	.100	A440	0	0	KD-S82396
18	.265 X .174	S	U	.900 X .310	.020	.025	-	.085	.035	.100	A440	0	0 or 1	KD-S77032-G
18	.265 X .174	S	U	.900 X .310	.025	.020	-	.085	.035	.100	A440	0	0	KD-S82281-A
18	.300 X .180	S	U	.910MAX. X .310	.020	.025	-	.085	.035	.100	A440	0	0	KD-S86634
18	.315 X .221	S	U	.900 X .310	.020	.025	-	.085	.035	.100	A440	0	0	KD-S78530-C
18	.320 X .175	S	U	.900 X .310	.020	.025	-	.085	.035	.100	A440	0	0 or 1	KD-S77175-F
18	.320 X .175	S	U	.900 X .310	.020	.025	-	.085	.035	.100	A440	0	0	KD-S82662
18	.477 X .226	S	U	.900 X .310	.028	.028	-	.096	.035	.100	A440	0	0	KD-S84047
18	.480 X .175	S	U	.900 X .310	.020	.025	-	.085	.035	.100	A440	0	0	KD-S84779

LEAD COUNT	CAVITY			OVERALL C x D	LAYER THICKNESS				LEAD		KYOCERA MATERIAL CODE A440: Black A473: White	CONNECTION		DRAWING NO.
	DIE CAV. A x B	W/B TIER SINGLE(S) DOUBLE(D)	UP(U) DOWN(D)		1ST	2ND	3RD	TOTAL	STNAND OFF HEIGHT	PITCH		SEAL RING	DIE ATTACH	
18	.480 X .200	S	U	.900 X .310	.025	.025	-	.090	.035	.100	A440	0	0	KD-S86302-B
20	.215 X .160	S	U	1.000 X .310	.020	.025	-	.085	.035	.100	A440	0	0	KD-S84357
20	.215 X .174	S	U	1.000 X .310	.020	.025	-	.085	.035	.100	A440	0	0	KD-S77050-D
20	.250 X .150MIN.	S	U	1.000 X .310	.020	.020	-	.060	.035	.100	A440	0	0	KD-S83438
20	.260 X .175	S	U	1.000 X .310	.025	.020	-	.085	.035	.100	A440	0	0 or 1	KD-S76250-C
20	.260 X .175	S	U	1.000 X .310	.020	.025	-	.085	.035	.100	A440	0	0	KD-S82447-A
20	.260 X .190	S	U	1.000 X .310	.020	.020	-	.080	.035	.100	A440	0	0	KD-S85546-B
20	.320 X .175	S	U	1.000 X .310	.020	.025	-	.085	.035	.100	A440	0	0	KD-S80383-B
20	.320 X .175	S	U	1.000 X .310	.020	.025	-	.085	.035	.100	A440	0	0	KD-S86832
20	.375 X .200	S	U	1.000 X .310	.025	.025	-	.090	.035	.100	A440	0	0	KD-S87735-A
22	.200SQ MIN.	S	U	1.080 X .410	.020	.025	-	.085	.038	.100	A440	0	0	KD-S83271-C
22	.205 X .185	S	U	1.080 X .410	.020	.020	-	.080	.038	.100	A440	0 or 1	0 or 1	KD-S77261-D
22	.250 X .220	S	U	1.080 X .410	.025	.025	-	.080	.038	.100	A440	0	0	KD-S82235
22	.280 X .250	S	U	1.080 X .410	.025	.025	-	.090	.038	.100	A440	17	17	KD-S87500
22	.280 X .260	S	U	1.080 X .410	.025	.025	-	.085	.038	.100	A440	0	0	KD-S77262-E
22	.280 X .260	S	U	1.080 X .410	.020	.025	-	.085	.038	.100	A440	0	0	KD-S78409-C
22	.310 X .260	S	U	1.080 X .410	.025	.020	-	.085	.038	.100	A440	0, 1, 6 or 22	0, 1, 6 or 22	KD-S75349-E
22	.320 X .175	S	U	1.100 X .310	.020	.025	-	.085	.038	.100	A440	9	0	KD-S85808
22	.394 X .244	S	U	1.080 X .410	.025	.025	-	.085	.038	.100	A440	0	0	KD-S84421-B
24	.210SQ	S	U	1.200 X .610	.020	.025	-	.085	.050	.100	A440	0	0	KD-S82425-B
24	.210SQ	S	U	1.200 X .610	.020	.025	-	.085	.050	.100	A440	N	0	KD-S85804
24	.250SQ	S	U	1.200 X .610	.020	.025	-	.085	.050	.100	A440	0, 1, 12 or 24	0, 1, 12 or 24	KD-S78299-J
24	.250SQ	S	U	1.200 X .610	.020	.020	-	.080	.050	.100	A440	0	0	KD-S78305-A
24	.250SQ	S	U	1.200 X .610	.020	.025	-	.085	.050	.100	A440	0	0	KD-S81036
24	.250SQ	S	U	1.200 X .610	.020	.029	-	.090	.050	.100	A440	0	0	KD-S85992
24	.250SQ	S	U	1.200 X .610	.025	.025	-	.090	.050	.100	A440	0	0	KD-S89808-B
24	.300SQ	S	U	1.200 X .610	.020	.025	-	.085	.050	.100	A440	0	0	KD-S79562-A
24	.300SQ	S	U	1.200 X .610	.020	.025	-	.085	.050	.100	A440	0	0	KD-S82061
24	.300 X .195MIN.	S	U	1.200 X .310	.025	.020	-	.085	.050	.100	A440	0	0	KD-S83666
24	.310SQ	S	U	1.200 X .610	.020	.025	-	.085	.050	.100	A440	0, 1, 9 or 12	0, 1, 9, 12 or 24	KD-S78382-H
24	.310SQ	S	U	1.200 X .610	.020	.030	-	.090	.050	.100	A440	0	0	KD-S84015-A
24	.310SQ	S	U	1.200 X .610	.020	.025	-	.085	.050	.100	A440	0	0	KD-S86840
24	.310SQ	S	U	1.200 X .610	.030	.025	-	.085	.050	.100	A440	0	0 or 14	KD-S86898-B
24	.310SQ	S	U	1.200 X .610	.020	.025	-	.085	.050	.100	A440	0, 1, 9 or 12	0, 1, 9 or 12	KD-S88460
24	.350 X .165	S	U	1.200 X .310	.025	.020	-	.085	.050	.100	A440	0	0	KD-S84728
24	.350 X .175	S	U	1.200 X .310	.025	.020	-	.085	.050	.100	A440	0	0	KD-S80160-D
24	.380SQ	S	U	1.200 X .610	.025	.025	-	.090	.050	.100	A440	0	0 or 21	KD-S78495-C
24	.380SQ	S	U	1.200 X .610	.020	.025	-	.085	.050	.100	A440	0	0 or 1	KD-S78516-D
24	.390 X .220	S	U	1.200 X .310	.020	.025	-	.085	.050	.100	A440	0	0	KD-S86789-C

LEAD COUNT	CAVITY			OVERALL C x D	LAYER THICKNESS				LEAD		KYOCERA MATERIAL CODE A440: Black A473: White	CONNECTION		DRAWING NO.
	DIE CAV. A x B	W/B TIER SINGLE(S) DOUBLE(D)	UP(U) DOWN(D)		1ST	2ND	3RD	TOTAL	STNAND OFF HEIGHT	PITCH		SEAL RING	DIE ATTACH	
24	.430 X .220	S	U	1.200 X .310	.020	.025	-	.085	.050	.100	A440	0	0	KD-S84459-B
24	.500 X .170	S	U	1.200 X .310	.015	.030	-	.085	.050	.100	A440	0	0	KD-S86927-A
24	.500 X .378	S	U	1.200 X .610	.025	.025	-	.090	.050	.100	A440	0	0	KD-S82228
24	.650 X .430	S	U	1.200 X .610	.025	.025	-	.100	.050	.100	A473	0	0	KD-S83512-A
24	.650 X .430	S	U	1.200 X .610	.025	.025	-	.100	.050	.100	A473	0	0	KD-S92459
28	.220SQ	S	U	1.400 X .610	.020	.025	-	.085	.050	.100	A440	0	0	KD-S88909-A
28	.250SQ	S	U	1.400 X .610	.020	.025	-	.085	.050	.100	A440	0, 1 or 14	0, 1 or 14	KD-S78368-E
28	.250SQ	S	U	1.400 X .610	.020	.020	-	.080	.050	.100	A440	0 or 1	0 or 1	KD-S78373-B
28	.250SQ	S	U	1.400 X .610	.020	.025	-	.085	.050	.100	A440	0	0	KD-S80065
28	.250SQ	S	U	1.400 X .610	.020	.025	-	.085	.050	.100	A440	0	0	KD-S85333-B
28	.250SQ	S	U	1.400 X .610	.025	.025	-	.090	.050	.100	A440	0	0	KD-S90444
28	.250 X .300	S	U	1.400 X .610	.020	.025	-	.085	.050	.100	A440	0	0	KD-S84523-B
28	.310SQ	S	U	1.400 X .610	.020	.020	-	.080	.050	.100	A440	0 or 1	0 or 1	KD-S78371-C
28	.310SQ	S	U	1.400 X .610	.020	.025	-	.085	.050	.100	A440	0, 1 or 14	0, 1 or 14	KD-S78385-F
28	.310SQ	S	U	1.400 X .610	.020	.020	-	.080	.050	.100	A440	0 or 1	0 or 1	KD-S78436
28	.310SQ	S	U	1.400 X .610	.025	.030	-	.085	.050	.100	A440	0	0	KD-S79275-A
28	.310SQ	S	U	1.400 X .610	.020	.025	-	.085	.050	.100	A440	0 or 1	0 or 1	KD-S80260-D
28	.310SQ	S	U	1.400 X .610	.025	.025	-	.090	.050	.100	A440	0	0	KD-S80501-B
28	.310SQ	S	U	1.400 X .610	.020	.025	-	.085	.050	.100	A440	0	0	KD-S81533-E
28	.310SQ	S	U	1.400 X .610	.025	.030	-	.085	.050	.100	A440	0	0	KD-S86130
28	.350SQ	S	U	1.400 X .610	.020	.025	-	.085	.050	.100	A440	0 or 1	0 or 1	KD-S81303
28	.350SQ	S	U	1.400 X .610	.020	.025	-	.085	.050	.100	A440	0	0	KD-S83103-A
28	.350SQ	S	U	1.400 X .610	.025	.030	-	.095	.050	.100	A440	0	1	KD-S90753-A
28	.390SQ	S	U	1.400 X .610	.020	.025	-	.085	.050	.100	A440	0	0	KD-S86496
28	.394SQ	S	U	1.400 X .610	.020	.025	-	.085	.050	.100	A440	0	0	KD-S82759-B
28	.410 X .300	S	U	1.400 X .610	.025	.025	-	.090	.050	.100	A440	0 or 1	0 or 1	KD-S79136-C
28	.410 X .300	S	U	1.400 X .610	.025	.025	-	.090	.050	.100	A440	0	0	KD-S83249-B
28	.410 X .300	S	U	1.400 X .610	.025	.025	-	.090	.050	.100	A440	0	0	KD-S87577-A
28	.410 X .300	S	U	1.400 X .610	.025	.040	-	.105	.050	.100	A440	0	0	KD-S91464
28	.410 X .320	S	U	1.400 X .610	.025	.025	-	.090	.050	.100	A440	N	0	KD-S87559
28	.450 X .220	S	U	1.400 X .310	.020	.025	-	.085	.050	.100	A440	0	0	KD-S89470-B
28	.765 X .260	S	U	1.400 X .410	.020	.020	-	.115	.050	.100	A440	1	1	KD-S87484-B
32	.450 X .220	S	U	1.600 X .310	.020	.025	-	.085	.050	.100	A440	0	0	KD-S89472
40	.190SQ	S	U	2.000 X .610	.020	.025	-	.085	.050	.100	A440	0	0	KD-S80644-C
40	.190SQ	S	U	2.000 X .610	.020	.025	-	.085	.050	.100	A440	0	0	KD-S85737-A
40	.242 X .170	S	U	2.000 X .610	.020	.020	-	.080	.050	.100	A440	0	0	KD-S85C19-A
40	.250SQ	S	U	2.000 X .610	.025	.025	-	.090	.050	.100	A440	0	0	KD-S77169-A
40	.250SQ	S	U	2.000 X .610	.020	.025	-	.085	.050	.100	A440	0	0 or 1	KD-S78282-D
40	.250SQ	S	U	2.000 X .610	.020	.020	-	.080	.050	.100	A440	0, 1 or 40	0, 1 or 40	KD-S78346-B

UNIT : inch [Click here for metric dimensions](#)

N=No Metallization  
0=No Connection

R0157A

LEAD COUNT	CAVITY			OVERALL C x D	LAYER THICKNESS				LEAD		KYOCERA MATERIAL CODE A440: Black A473: White	CONNECTION		DRAWING NO.
	DIE CAV. A x B	W/B TIER SINGLE(S) DOUBLE(D)	UP(U) DOWN(D)		1ST	2ND	3RD	TOTAL	STNAND OFF HEIGHT	PITCH		SEAL RING	DIE ATTACH	
40	.250SQ	S	U	2.000 X .610	.020	.025	-	.085	.050	.100	A440	0	0, 1 or 40	KD-S78286-D
40	.310SQ	S	U	2.000 X .610	.020	.025	-	.085	.050	.100	A440	0 or 1	0, 1 or 40	KD-S78163-E
40	.310SQ	S	U	2.000 X .610	.020	.020	-	.080	.050	.100	A440	0 or 1	0 or 1	KD-S78258-C
40	.310SQ	S	U	2.000 X .610	.020	.025	-	.085	.050	.100	A440	0	0 or 1	KD-S78300-F
40	.310SQ	S	U	2.000 X .610	.020	.030	-	.080	.050	.100	A440	0	0	KD-S80338
40	.340SQ	S	U	2.000 X .610	.020	.025	-	.085	.050	.100	A440	0 or 1	0 or 1	KD-S79190-C
40	.340SQ	S	U	2.000 X .610	.020	.020	-	.080	.050	.100	A440	0	0	KD-S82449-C
40	.370SQ	S	U	2.000 X .610	.025	.025	-	.090	.050	.100	A440	0 or 1	0 or 1	KD-S80462-B
40	.379SQ	S	U	2.000 X .610	.025	.025	-	.090	.050	.100	A440	0	0	KD-S85322-B
40	.380 X .350	S	U	2.000 X .610	.025	.025	-	.090	.050	.100	A440	0 or 1	0 or 1	KD-S80532-B
40	.400SQ	S	U	2.000 X .610	.025	.025	-	.090	.050	.100	A440	0	0, 1 or 40	KD-S78302-D
40	.400SQ	S	U	2.000 X .610	.020	.025	-	.085	.050	.100	A440	0	0	KD-S80561-A
40	.400SQ	S	U	2.000 X .610	.025	.025	-	.090	.050	.100	A440	0	0	KD-S84434-A
40	.400 X .380	S	U	2.000 X .610	.025	.025	-	.090	.050	.100	A440	0	0	KD-S84775-A
40	.450 X .350	S	U	2.000 X .610	.025	.025	-	.090	.050	.100	A440	0	0	KD-S86A95-B
40	.525 X .400	S	U	2.000 X .610	.025	.025	-	.090	.050	.100	A440	0	0	KD-S87609
48	.250SQ	S	U	2.400 X .610	.020	.025	-	.085	.050	.100	A440	0	0	KD-80177-E
48	.310SQ	S	U	2.400 X .610	.020	.025	-	.085	.050	.100	A440	0 or 1	0 or 1	KD-S77158-G
48	.310SQ	S	U	2.400 X .610	.020	.025	-	.085	.050	.100	A440	0	0	KD-S87934-C
48	.331 X .315	S	U	2.400 X .610	.020	.025	-	.085	.050	.100	A440	0	0	KD-S83567
48	.340SQ	S	U	2.400 X .610	.020	.025	-	.085	.050	.100	A440	0	0	KD-S82293-C
48	.350SQ	S	U	2.400 X .610	.020	.025	-	.085	.050	.100	A440	1	0 or 1	KD-S79237-F
48	.370SQ	S	U	2.400 X .610	.020	.025	-	.085	.050	.100	A440	0	0	KD-S84514
48	.400SQ	S	U	2.400 X .610	.020	.025	-	.085	.050	.100	A440	0	0	KD-S78527-G
48	.430 X .400	S	U	2.400 X .610	.020	.025	-	.085	.050	.100	A440	0	0	KD-S85870
48	.490 X .400	S	U	2.400 X .610	.020	.025	-	.085	.050	.100	A440	0	0	KD-S84193-A
64	.275SQ	S	U	3.200 X .910	.020	.025	-	.085	.050	.100	A440	0	0	KD-S85318
64	.310SQ	S	U	3.200 X .910	.020	.025	-	.085	.050	.100	A440	0	0	KD-S85735
64	.350SQ	S	U	3.200 X .910	.020	.025	-	.085	.050	.100	A440	0	0	KD-S82806-A
64	.400SQ	S	U	3.200 X .910	.020	.025	-	.085	.050	.100	A440	0	0	KD-S83665
64	.400SQ	S	U	3.200 X .910	.020	.025	-	.085	.050	.100	A440	0	0	KD-S84566-A
64	.551MIN. X .433MIN.	S	U	3.200 X .910	.020	.025	-	.085	.050	.100	A440	N	1	KD-S79513-C