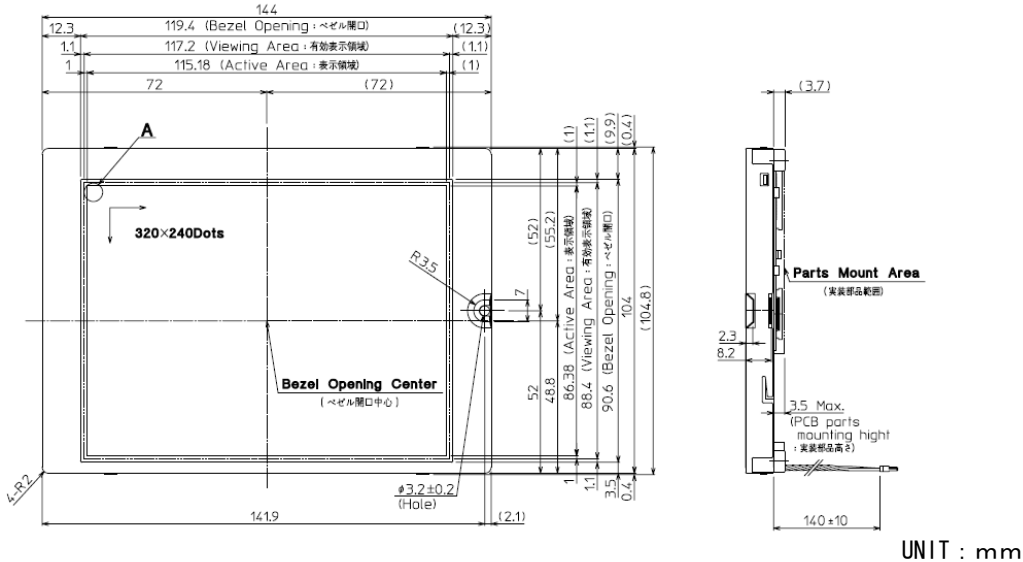


Symmetrical Design, LED Backlight

**5.7"** Passive Matrix Monochrome LCD Module  
**KG057QVLCD-G000**



**Features**

- RoHS Compliant
- With LED B/L
- Symmetrical Design (Horizontal)
- Single Power Supply (With DC/DC Converter)
- Long Life LED 50,000(h) (Estimated Value)
- Without Constant Current Circuit for LED B/L (Option)
- V Series Compatible Design
  - KG057QVL ... Color STN
  - TCG057QVL ... Color TFT

**Applications**

- Display for Industrial Machine
- Measuring Instrument, Chart Recorder, Scale
- POS, ATM, Bank Terminal
- Musical Instrument, Sewing Machine
- Office Automation

**Specification**

ITEM	SPECIFICATION	UNIT
Dot Format	320 (W) × 240 (H)	dot
Dot Pitch	0.36 (W) × 0.36 (H)	mm
Outline Dimensions	144 (W) × (104.8) (H) × 12.7 (D)	mm
Mass	175	g
Contrast Ratio	10:1	—
Brightness	300 (IF=25mA/1Line)	cd/m <sup>2</sup>
Response Time	500	ms
Viewing Angle (V/H)	60/90 (CR ≥ 2)	deg.
Power Consumption	83 (VDD=3.3V)	mW
	85 (VDD=5.0V) (LCD)	
	1.73 (Backlight)	
Backlight	LED	—
Duty	1/240	—

ATTENTION : Specification subject to change without notice.  
Please check the latest version of the product specification.

**KYOCERA CORPORATION**  
**LCD Division**

6 Takeda Tobadono-cho, Fushimi-ku, Kyoto 612-8501 Japan  
Phone: +81-75-604-3751 <http://www.kyocera.co.jp/lcd/>

- KYOCERA INDUSTRIAL CERAMICS CORPORATION (USA)  
Phone (Toll Free) : +1-800-826-0527 <http://www.kyocera.com/>
- KYOCERA FINECERAMICS GmbH (GERMANY)  
Phone : +49-711-939-3439 <http://www.kyocera.de/>
- KYOCERA FINECERAMICS S.A. (FRANCE)  
Phone : +33-1-45120239
- KYOCERA FINECERAMICS LTD. (UK)  
Phone : +44-1252-776000
- KYOCERA ASIA PACIFIC PTE. LTD. (SINGAPORE)  
Phone : +65-6271-0500
- KYOCERA ASIA PACIFIC PTE. LTD. TAIPEI BRANCH (TAIWAN)  
Phone : +886-2-2555-3609
- KYOCERA ASIA PACIFIC LTD. (HONG KONG)  
Phone : +852-2723-7183
- KYOCERA (Tianjin) SALES & TRADING CORPORATION (CHINA)  
Phone : +86-10-8528-8838 ext.103