



Ph Free

RoHS Compliant

Features

- Small size
- Low insertion loss
- High selectivity
- Hermetic seal

Application

- JCDMA

How to Order

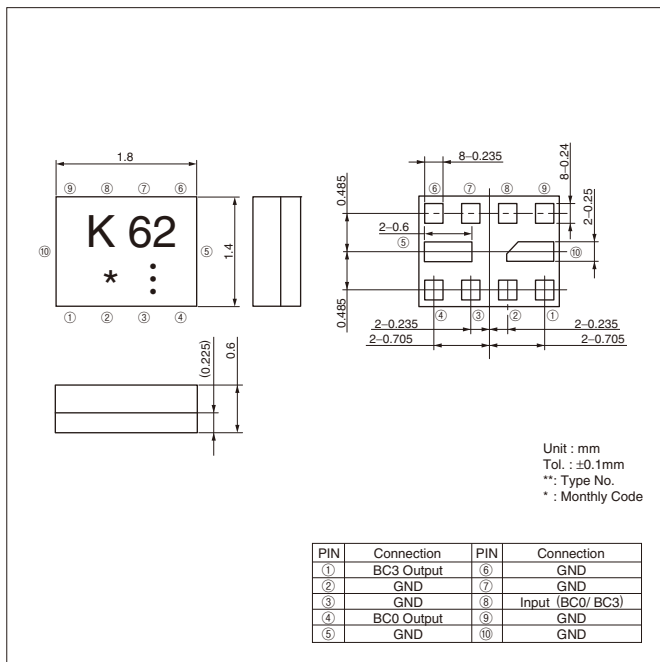
SF 18 - 0836 T A UU 31
 ① ② ③ ④ ⑤ ⑥ ⑦

- ① Type of Product (SAW Filter)
- ② Package Size
- ③ Nominal Center Frequency
- ④ Spec.
- ⑤ Number of Terminals
- ⑥ Input/ Output
- ⑦ Custom Specification (STD)

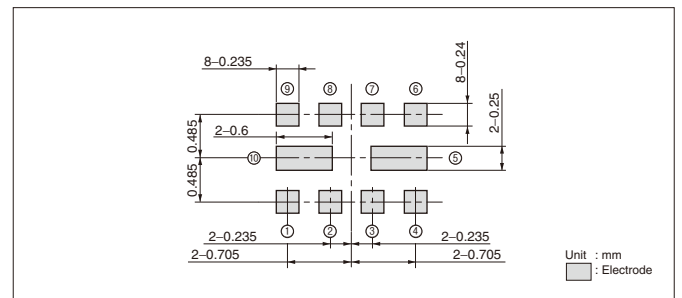
Specifications

Part No.	Output	Application	Pass Band Frequency	Insertion Loss (dB)	Pass Band Variation (dB)	VSWR	Absolute Rejection (dB)						Operating Temperature	Storage Temperature
							10MHz	860MHz	869MHz	894MHz	1210MHz	2000MHz		
SF18-0836TAUU31	Unbalance	US-CDMA BC0 Tx Inter-stage	824MHz - 849MHz	2.7 max.	1.5 max.	2.1 max.	35 min.	15 min.	40 min.	35 min.	35 min.	30 min.	-30 to +85°C	-40 to +85°C
			10MHz	832MHz	869MHz	1330MHz	2694MHz	—						
		JCDMA BC3 Tx Inter-stage	898MHz - 925MHz	2.8 max.	1.5 max.	2.5 max.	45 min.	40 min.	40 min.	40 min.	30 min.	—		

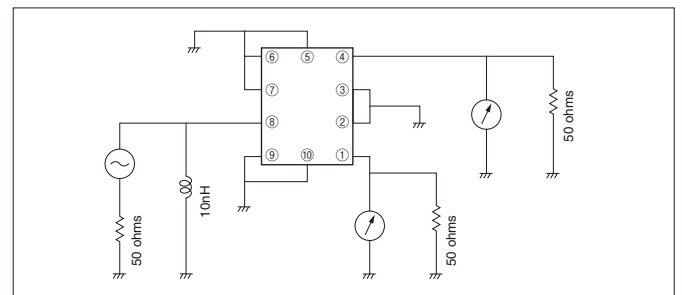
Dimensions



Recommended Land Pattern

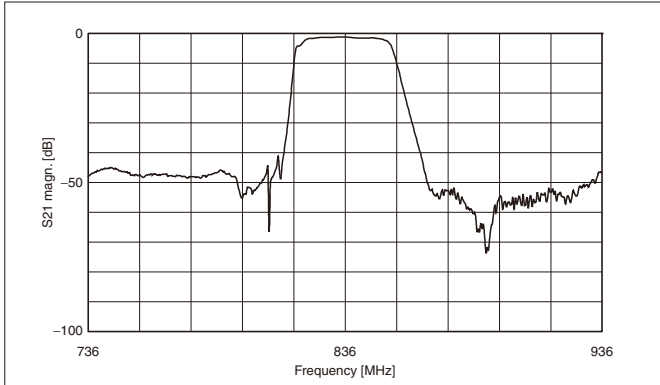


Test Circuit

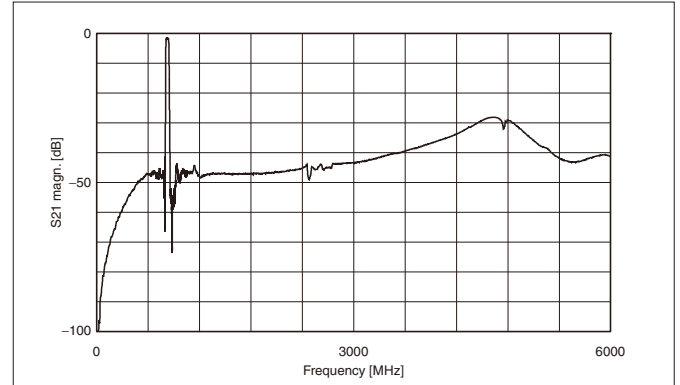


Characteristics

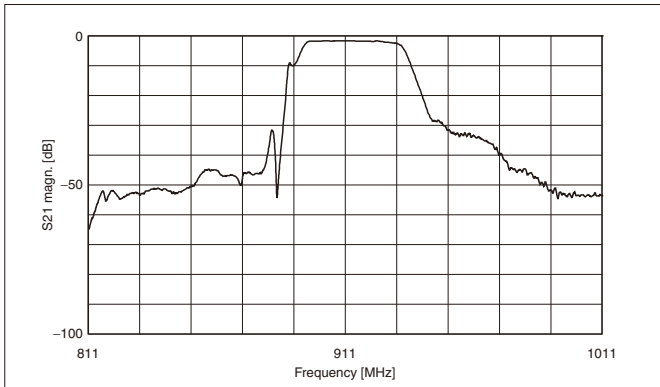
<US-CDMA BC0 Tx> Part No.: SF18-0836TAUU31



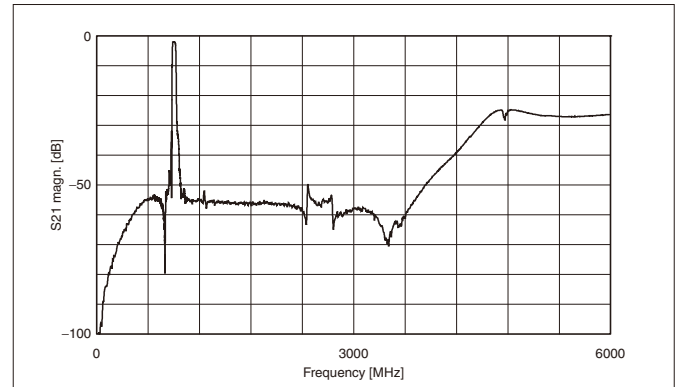
<US-CDMA BC0 Tx> Part No.: SF18-0836TAUU31



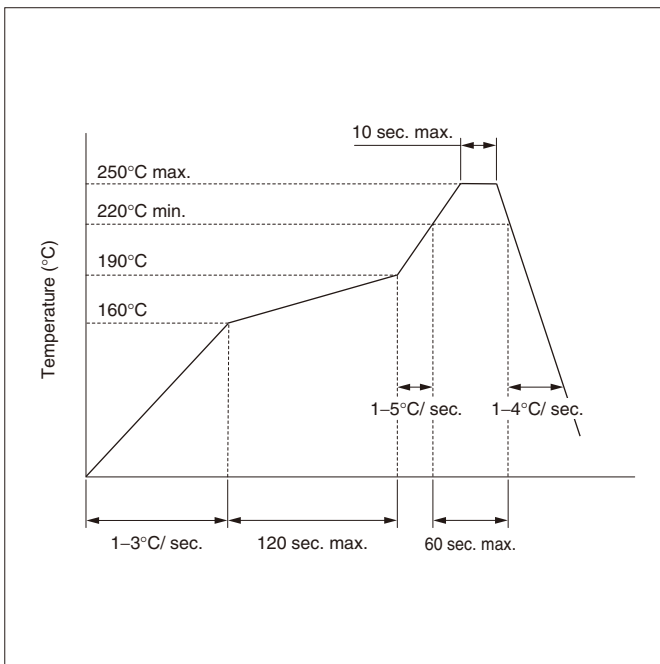
<JCDMA BC3 Tx> Part No.: SF18-0836TAUU31



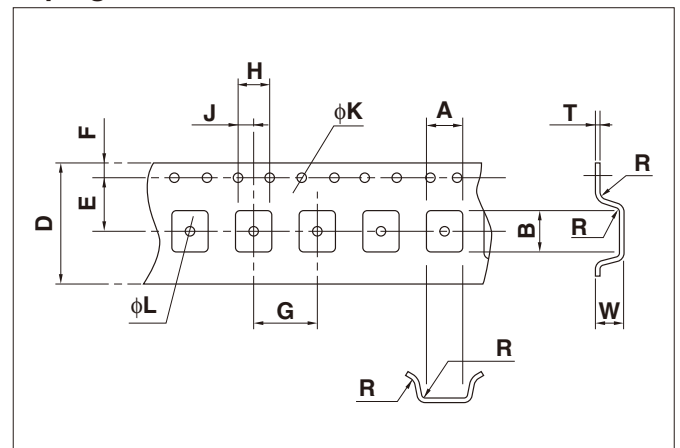
<JCDMA BC3 Tx> Part No.: SF18-0836TAUU31



Recommended Reflow Profile



Taping Dimensions



(Unit: mm)

Part	A	B	D	E	F
Dimension	1.7±0.05	2.05±0.05	8.0±0.1	3.5±0.05	1.75±0.1
Part	G	H	J	K	L
Dimension	4.0±0.1	4.0±0.1	2.0±0.05	1.5 ^{+0.1} ₋₀	0.8±0.05
Part	R	W	T		
Dimension	0.2 max.	0.85 ⁺⁰ _{-0.5}	0.2±0.05		