



Ph Free

RoHS Compliant

Features

- Small size
- Low insertion loss
- High selectivity
- Hermetic seal

Application

- W-CDMA

How to Order

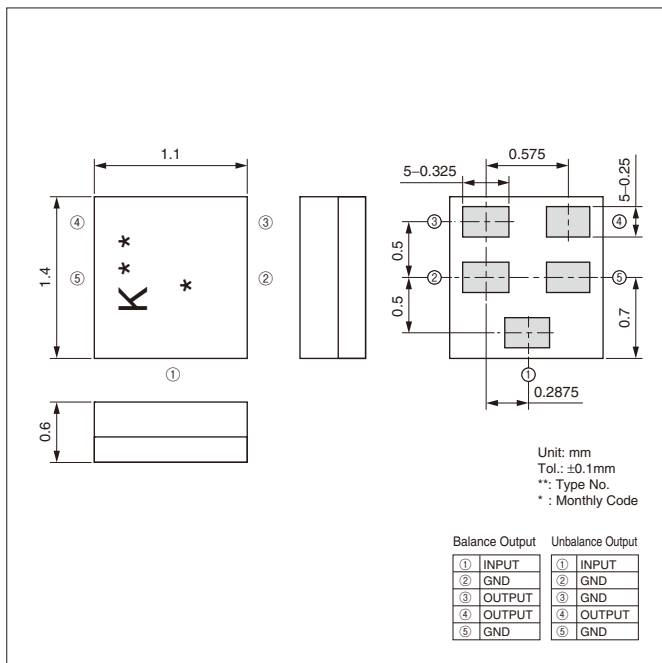
SF 14 - 2140 M 5 UB 00
① ② ③ ④ ⑤ ⑥ ⑦

- ① Type of Product (SAW Filter)
- ② Package Size
- ③ Nominal Center Frequency
- ④ Spec.
- ⑤ Number of Terminals
- ⑥ Input/ Output
- ⑦ Custom Specification (STD)

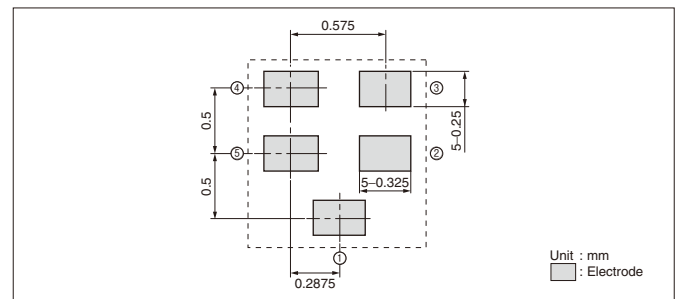
Specifications

Part No.	Output	Application	Pass Band Frequency	Insertion Loss (dB)	Pass Band Variation (dB)	VSWR	Absolute Rejection (dB)						Operating Temperature	Storage Temperature
							10MHz	1920MHz	1980MHz	2025MHz	2230MHz	2255MHz		
SF14-2140M5UB00	Balance	Band1 Rx	2110MHz - 2170MHz	2.5 max.	2.0 max.	2.5 max.	10MHz	1920MHz	1980MHz	2025MHz	2230MHz	2255MHz	-30 to +85°C	-40 to +85°C
							30 min.	35 min.	25 min.	20 min.	20 min.	20 min.		
SF14-1950M5UU00	Unbalance	Band1 Tx	1920MHz - 1980MHz	3.0 max.	2.0 max.	2.3 max.	10MHz	1570MHz	1880MHz	2110MHz	2300MHz	2500MHz	-30 to +85°C	-40 to +85°C
							28 min.	30 min.	35 min.	32 min.	32 min.	28 min.		

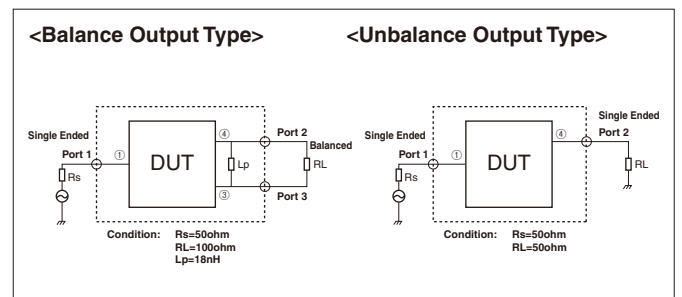
Dimensions



Recommended Land Pattern

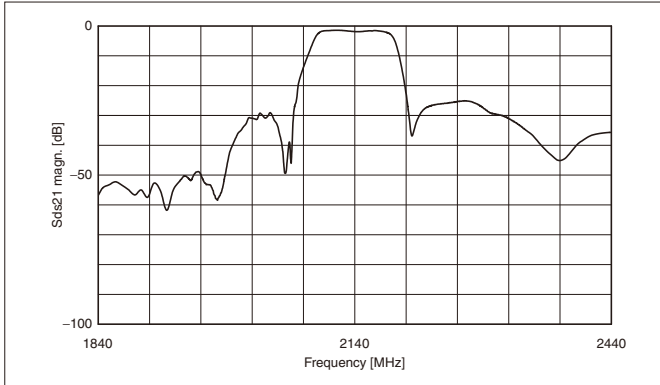


Test Circuit

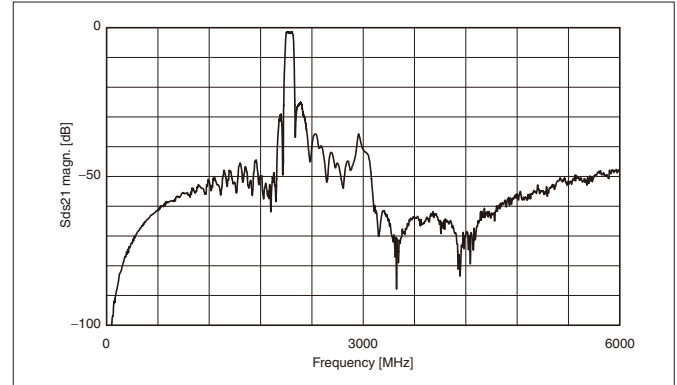


Characteristics

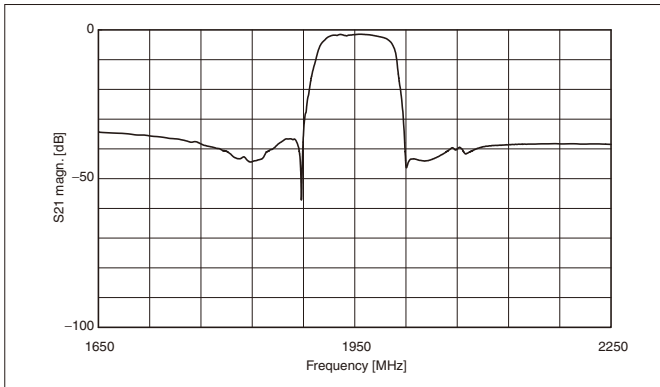
<W-CDMA Rx> Part No.: SF14-2140M5UB00



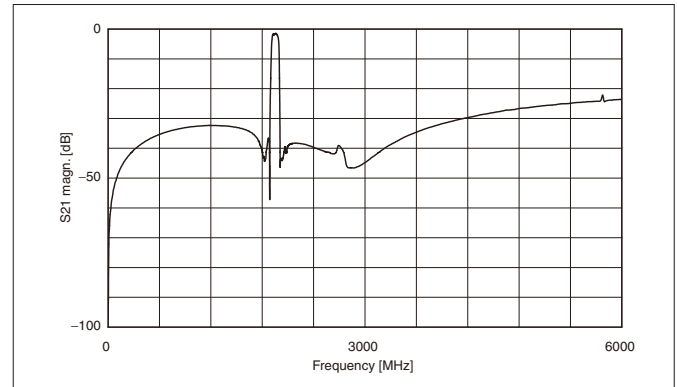
<W-CDMA Rx> Part No.: SF14-2140M5UB00



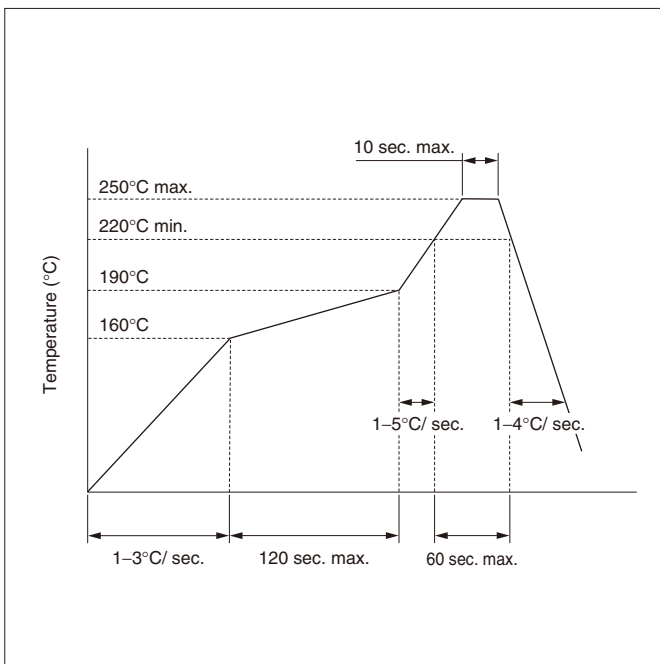
<W-CDMA Tx> Part No.: SF14-1950M5UU00



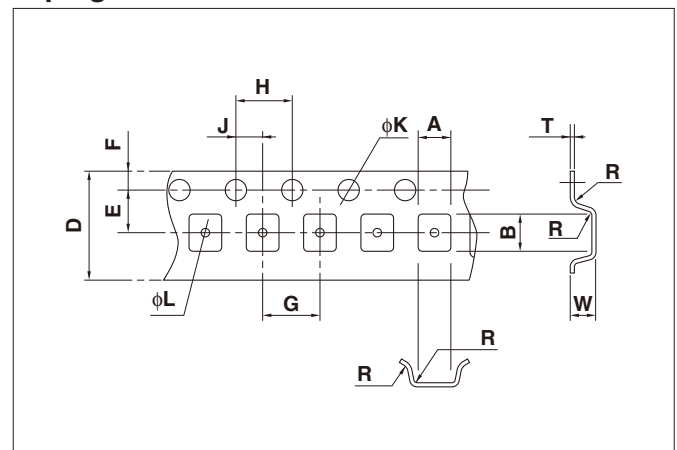
<W-CDMA Tx> Part No.: SF14-1950M5UU00



Recommended Reflow Profile



Taping Dimensions



(Unit: mm)

Part	A	B	D	E	F
Dimension	1.4±0.1	1.7±0.1	8.0±0.2	3.5±0.05	1.75±0.1
Part	G	H	J	K	L
Dimension	4.0±0.1	4.0±0.1	2.0±0.05	1.5±0.1	0.5±0.05
Part	R	W	T		
Dimension	0.3 max.	0.8±0.1	0.2±0.05		